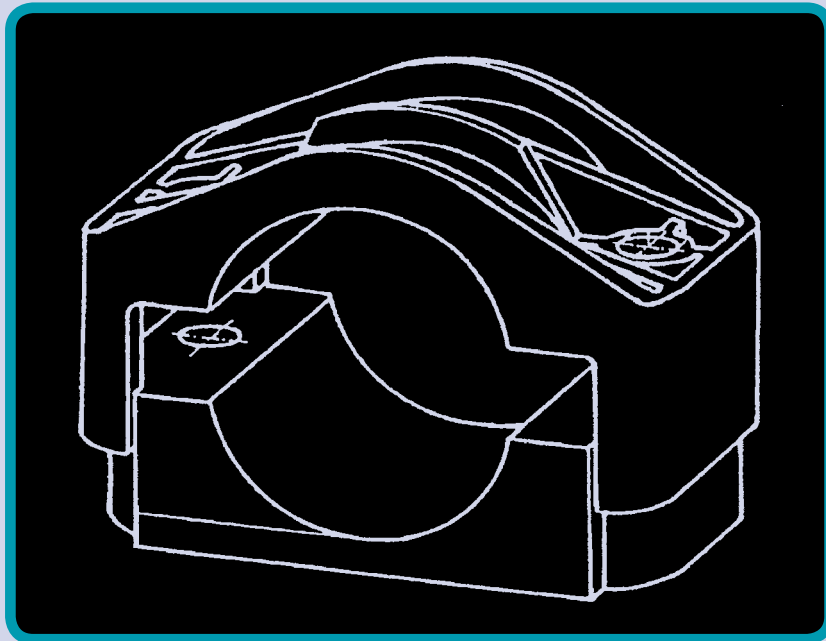


Id-Technik



ID Technik Cable Clamps



Ph 0800 442 182 Fax 0800 442 183
www.transnet.co.nz
e-mail: sales@transnet.co.nz

CABLE CLAMPS FOR LOW AND HIGH VOLTAGE CABLES

Series K Mechanical resistance to short-circuits: 10.000 N

Page 2

Type Outer cable diameter

K 26/38 26 - 38 mm

K 36/52 36 - 52 mm

K 50/75 50 - 75 mm

K 66/90 66 - 90 mm

Series KT Mechanical resistance to short-circuits: 20.000 N

Page 3

Type Outer cable diameter

KT 25/39 25 - 39 mm

Series KR Mechanical resistance to short-circuits: 20.000 N

Page 4

Type Outer cable diameter

KR 75/100 75 - 100 mm

KR 100/130 100 - 130 mm

KR 130/160 130 - 160 mm

CABLE CLAMPS FOR BUNDLED FASTENING OF LOW VOLTAGE CABLES

Series KS Mechanical resistance to short-circuits: 12.500 N

Page 5

Type Outer cable diameter

KS 25/36 25 - 36 mm

KS 33/46 33 - 46 mm

Series KP Mechanical resistance to short-circuits: 25.000 N

Page 6

Type Outer cable diameter

KP 29/41 29 - 41 mm

KP 39/53 39 - 53 mm

KP 51/64 51 - 64 mm

Series KH Mechanical resistance to short-circuits: 25.000 N

Page 7

Type Outer cable diameter

KH 73/86 73 - 86 mm

KH 84/97 84 - 97 mm

KH 105/117 105 - 117 mm

KH 115/140 115 - 140 mm

SPECIFICATION

Application:

Fastening of all types of single and multi-conductor high and low voltage cables.

Material:

Polyamide, fibreglass-reinforced, coloured black, flame resistant, special protection against ultraviolet rays, free of halogenes, fully recyclable.

Properties:

Tensile strength: 120N/mm²

Flexural strength: 210N/mm²

Thermal expansion: 0.01% per 10°C temperature increase

Flame resistance: UL94V-0 and classification following DIN 5510, part 2, flammability class S3.

Resistance to: Ultraviolet rays, ozone, oils, fuels, alkalis, radioactive rays.

Temperature range:

Ambient temperatures down to -40°C

Continuous operation up to 120°C

Short heating up to 220°C admissible

Constructional Features:

- The fibreglass-reinforced polyamide used in manufacture is marked by particularly high mechanical strength and heat resistance.
- Implementation both indoor and outdoor due to resistance to ageing, ozone and ultraviolet rays.
- No alteration in strength within a temperature range of -40 to 120°C. Thus particularly suitable for emergency operations of XLPE insulated cables.
- Because of its resistance to radioactive rays (at a radiation dose of 100 MRAD strength loss is less than 20%) implementation is also possible in nuclear power stations.
- As the length of the clamping area is very wide the mechanical pressure on the cable is low.
- The dynamic forces of high short-circuit currents are very effectively withstood. Implementation can be done in those cases where high short-circuit currents occur. Therefore a secure fixation of the cables is insured and damage to them is being avoided.
- The fastening of cable clamps can be adapted to all local conditions.
- Test reports from neutral laboratories concerning dynamic short-circuit currents, up to 110kA, and the fire resistance of the material, are available.

SERIES K

Application:

Fastening of single and multi-conductor cables

For cables with outer diameters of:

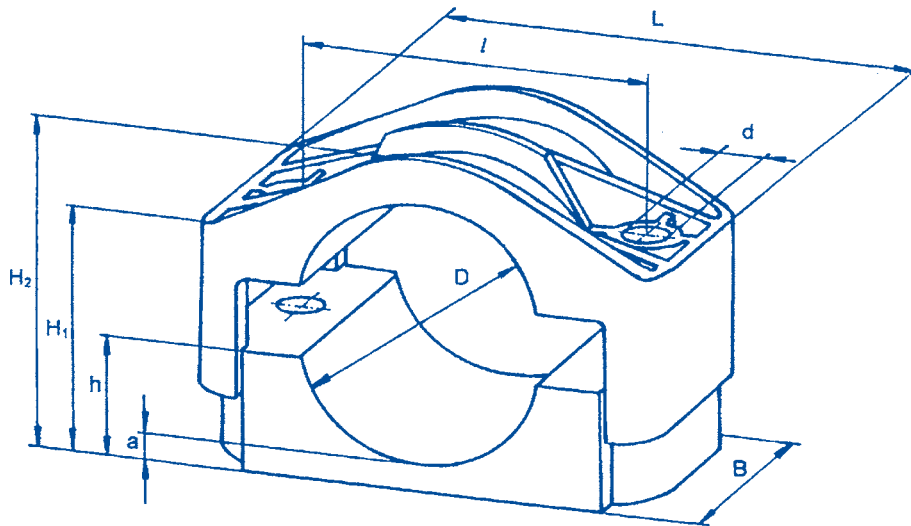
26mm - 90mm

Mechanical resistance to short circuits:

10.000 N

Maximum initial torque for fixing screws:

5Nm



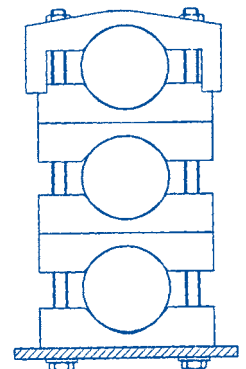
Dimensions in mm

Typ	Dø	L	B	l	dø	H ₁	H ₂	h	a
K 26/38	26 - 38	90	60	60	12	34 - 46	45 - 57	18	7
K 36/52	36 - 52	105	60	75	12	39 - 55	53 - 69	23	8
K 50/75	50 - 75	126	60	95	12	46 - 71	67 - 92	30	9
K 66/90	66 - 90	158	70	120	14	65 - 89	91 - 115	42	10

Dø indicates the outer cable diameter range

Example of fastening:

Additional bottom parts for arrangement of several cables



SERIES KT

Application:

Fastening of single and multi-conductor cables

For cables with outer diameters of:

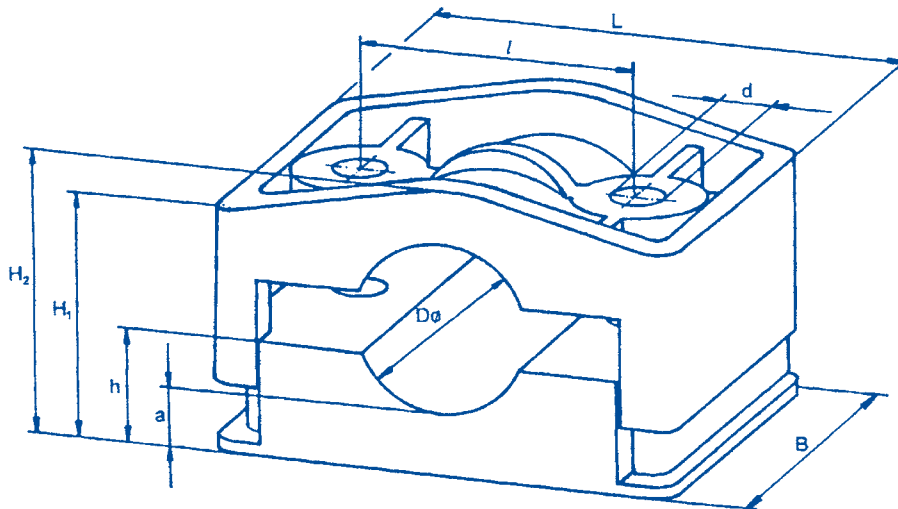
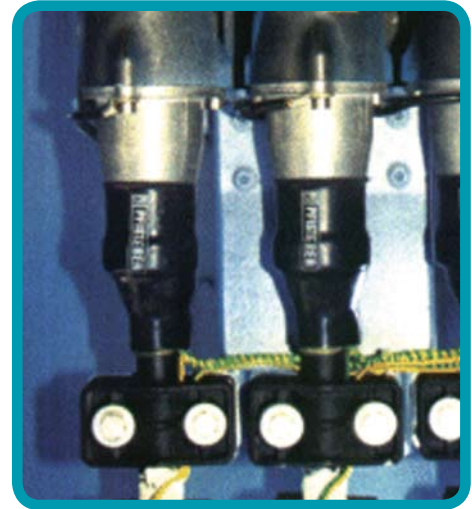
25mm - 39mm

Mechanical resistance to short circuits:

20.000N

Maximum initial torque for fixing screws:

5Nm



Dimensions in mm

Typ	Dø	L	B	l	dø	H ₁	H ₂	h	a
KT 25/39	25 - 39	107	60	65	13	46 - 60	55 - 69	27	15

Dø indicates the outer cable diameter range

SERIES KR

Application:

Fastening of single and multi-conductor cables

For cables with outer diameters of:

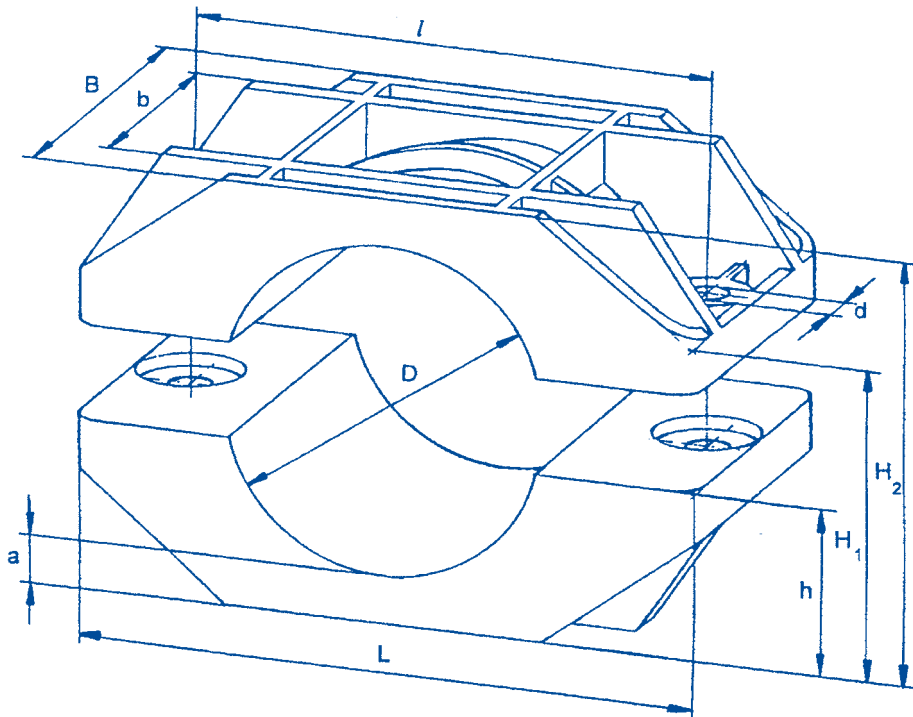
75mm - 160mm

Mechanical resistance to short-circuits:

20.000 N

Maximum initial torque for fixing screws:

8Nm



Dimensions in mm

Typ	Dø	L	B	b	l	dø	H ₁	H ₂	h	a
KR 75/100	75 - 100	180	77	44	150	14	68 - 93	105 - 130	52	13
KR 100/130	100 - 130	210	97	54	175	14	85 - 115	135 - 165	67	16
KR 130/160	130 - 160	250	97	54	210	18	113 - 143	170 - 200	85	20

Dø indicates the outer cable diameter range

SERIES KS

Application:

Fastening of single-conductor cables in trefoil arrangement

For cables with outer diameters of:

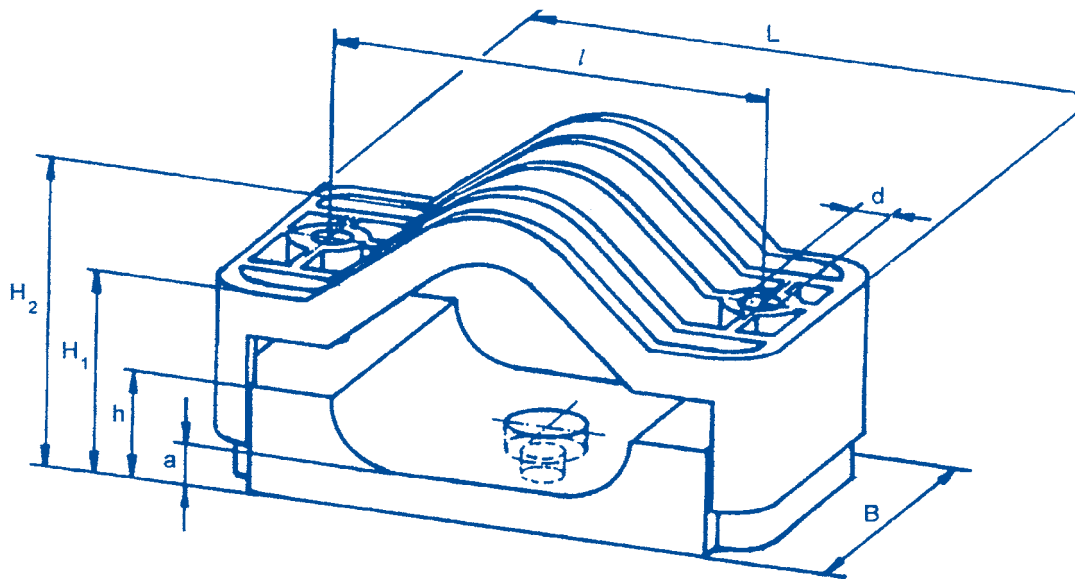
25mm - 46mm

Mechanical resistance to short-circuits:

12.500N

Maximum initial torque for fixing screws:

5Nm



The assembly hole in the bottom part of series "KS" permits direct fastening to lattice, concrete and wooden masts, suitable for M10 bolts. (See: Example Of Fastenings For Clamps)

Dimensions in mm

Typ	Dø	L	B	l	dø	H ₁	H ₂	h	a
KS 25/36	25 - 36	150	80	110	12	55 - 75	77 - 97	35	19
KS 33/46	33-46	170	80	130	12	55 - 75	90 - 110	35	15

Dø indicates the outer cable diameter range

SERIES KP

Application:

Fastening of single-conductor cables in trefoil arrangement

For cables with outer diameters of:

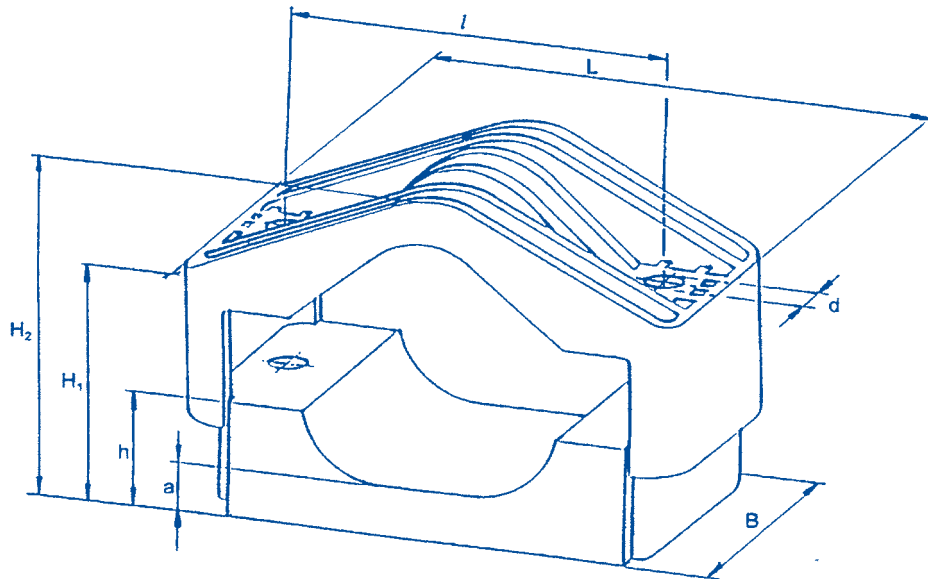
29mm - 64mm

Mechanical resistance to short-circuits:

25.000N

Maximum initial torque for fixing screws:

8Nm



Dimensions in mm

Typ	Dø	L	B	l	dø	H ₁	H ₂	h	a
KP 29/41	29 - 41	172	80	125	14	60 - 90	81 - 111	40	20
KP 39/53	39 - 53	190	80	145	14	63 - 93	101 - 131	45	20
KP 51/64	51 - 64	205	90	160	14	95 - 123	130 - 158	70	25

Dø indicates the outer cable diameter range

SERIES KH

Application:

Fastening of single-conductor cables in trefoil arrangement

For cables with outer diameters of:

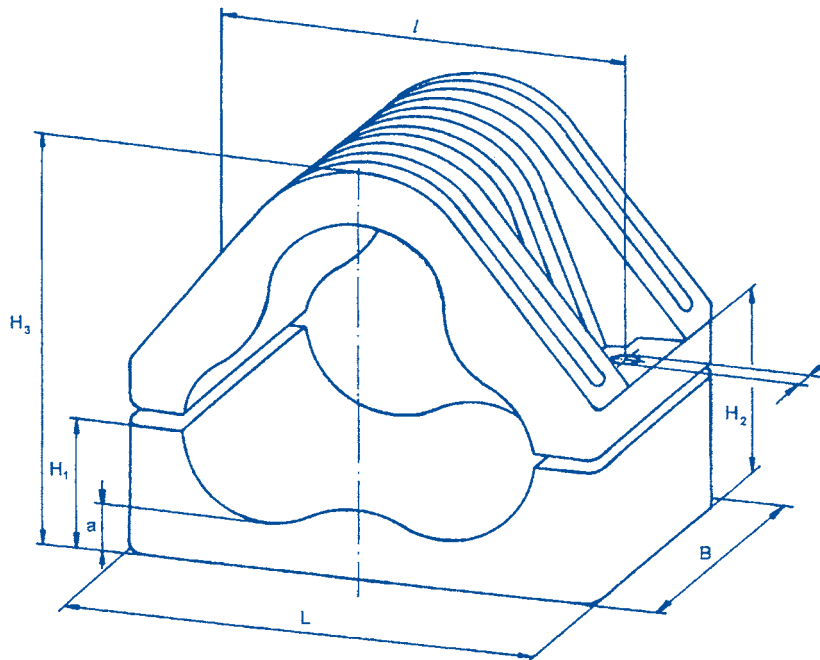
62mm - 140mm

Mechanical resistance to short-circuits:

25.000N

Maximum initial torque for fixing screws:

8Nm



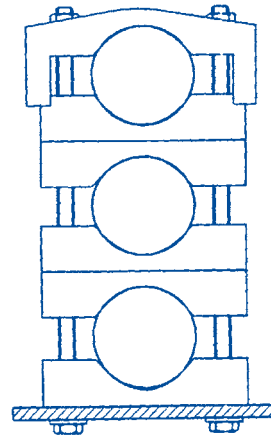
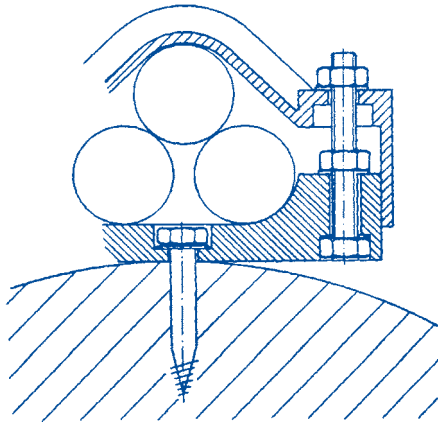
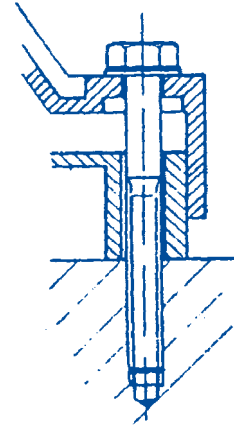
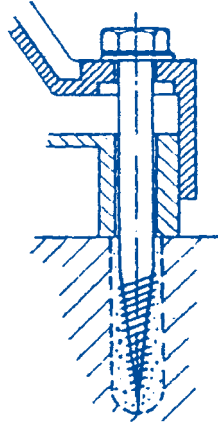
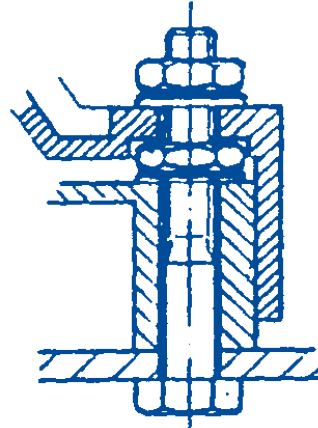
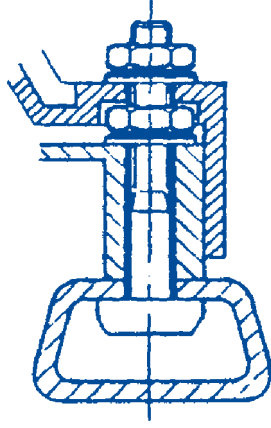
Dimensions in mm

Typ	Dø	L	B	l	dø	H ₁	H ₂	H ₃	a
KH 62/75*	62 - 75	225	90	185	18	80	114 - 142	172 - 200	30
KH 73/86	73 - 86	250	100	210	18	85	119 - 147	192 - 220	30
KH 84/97	84 - 97	270	100	230	18	95	128 - 156	214 - 242	30
KH 95/107*	95 - 107	290	100	250	18	103	136 - 164	244 - 262	30
KH 105/117	105 - 117	310	100	270	18	108	144 - 178	248 - 282	30
KH 115/140	115 - 140	365	120	320	18	145	182 - 242	270 - 330	35

Dø indicates the outer cable diameter range

* Delivery times and minimum quantity per order on request

EXAMPLES OF FASTENING CLAMPS



Only "KS" Series
Bolt Size: M10