

HEATSHRINK PRODUCTS

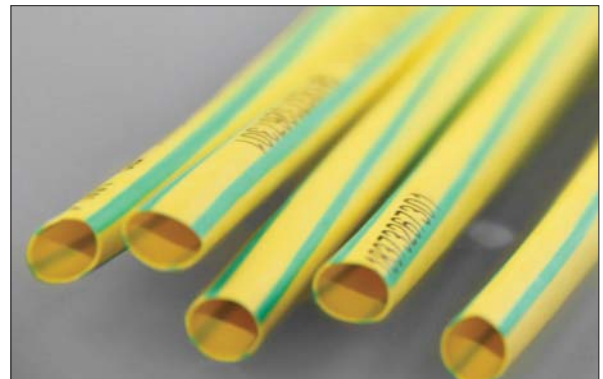
RAYCHEM HEATSHRINK	PAGE
EZI Shrink – Thin Wall General Purpose Tubing Heatshrink	118
RNF100 – General Purpose Low Voltage Heatshrink	119
DWP/ATUM – ES1000/ES2000 – Thin Wall Adhesive Lined Heatshrink	120
MWTM – Medium Wall Adhesive Lined Heatshrink	121
WCSM – Heavy Wall Adhesive Lined Heatshrink	122
CRSM – Heatshrinkable Adhesive Lined Wrap-around Repair Sleeve	123
Break Out Boots – Heatshrinkable Cable Breakouts	124
End Caps – Heatshrinkable Cable End Caps	125
DCPT – Flexible Polyolefin Tubing	126
TFER – Heatshrinkable Teflon Tubing	126
FCSM – Flexible Medium-Wall Tubing	127
CFTS – Heatshrinkable Feedthrough Cable Glands	127
LVBT – Low Voltage Busbar Tape	128
LVIT – Flexible Low Voltage Insulation Tubing	128
LVJM – LV Inline Joints for XLPE Cables up to 1kV – Includes Mechanical Connectors	129
CRSMCT – LV 1 Core Branch Joints up to 1kV	129
LVTM – LV Termination kits for XLPE cables for applications up to 1kV – Includes Mechanical Lugs	130
EPKJ – Heatshrinkable Low Voltage Joints	130
Rayvolve RVS – Tool Free Low Voltage Joint System	131
RDSS – Rayplate Duct Sealing System	132

EZISHRINK – THIN WALL TUBING HEATSHRINK

EziShrink Thin Wall Tubing is a high quality, heatshrinkable product for a variety of uses. Made from Flame Retardant Polyolefin Material, EziShrink has excellent physical, chemical and electrical properties.

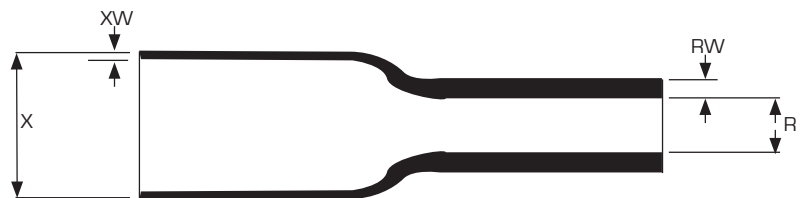
TECHNICAL DATA

- Rated Voltage: 600 Volts
- Dielectric Strength: 15kV/mm
- Tensile Strength: 10.4Mpa
- Available in 1200mm stick lengths
- Shrink Ratio 2:1



OPERATIONAL PARAMETERS

- Operating Temperatures: -55°C up to 125°C
- Shrink Start Temperature: 70°C
- Longitudinal Shrinkage: Less than 8%
- UL recognised to standard 224






COLOUR CODES

IN STOCK

 BK = BLACK	 G/Y = GREEN/YELLOW
 BU = BLUE	 GN = GREEN
 YO = YELLOW	 RD = RED

INDENT ONLY

 VT = VIOLET
 BR = BROWN
 WH = WHITE

CATALOGUE NUMBER EXAMPLE

EZHSBU(BLUE)6/3

CAT NO.	EXPANDED DIA. AS SUPPLIED (X) mm	EXPANDED WALL THICKNESS (XW) mm	RECOVERED DIA. (R) mm	RECOVERED WALL THICKNESS (RW) mm	APPLICATION RANGE DIA. mm	STANDARD LENGTH mm
EZHScolourcode1.5/0.8	1.5	0.15	0.8	0.28	0.9-1.4	1200
EZHScolourcode2/1	2	0.18	1	0.35	1.1-1.8	1200
EZHScolourcode311.5	3	0.18	1.5	0.40	1.7-2.8	1200
EZHScolourcod6/3	6	0.28	3	0.55	3.2-5.5	1200
EZHScolourcode10/5	10	0.30	5	0.60	5.5-9	1200
EZHScolourcode12/6	12	0.30	6	0.60	6.4-11	1200
EZHScolourcode20/10	20	0.40	10	0.80	11-18	1200
EZHScolourcode25/12	25	0.55	12	0.90	13-23	1200
EZHScolourcode40/20	40	0.55	20	1.00	22-36	1200
EZHScolourcode50/25	50	0.55	25	1.00	28-45	1200
EZHScolourcode80/40	80	0.70	40	1.46	44-70	1200

RNF100 – GENERAL PURPOSE LOW VOLTAGE HEATSHRINK

A premium grade flame-retardant polyolefin heatshrinkable tubing. Outstanding all round performance, good chemical and solvent resistance, flexible. Used extensively in military applications for lightweight harness jackets, insulation, colour coding, identification, protection against fluids and provides mechanical strength.

TECHNICAL DATA

- Excellent UV resistance
- Flame retardant (Black and colours only)
- Operating temperature -55°C to 135°C
- Minimum shrink temperature 95°C
- Minimum full recovery temperature 121°C
- Shrink ratio 2:1
- Available in 1200mm lengths or spools

APPLICATIONS

- Electrical insulation
- Wire strain relief
- Colour coding and identification
- Light weight and harness jacket



LENGTH
STK = Standard stick
SP = Spool

	CL= CLEAR		YO = YELLOW		WH = WHITE
	BK= BLACK		GN = GREEN		
	RD = RED		BU = BLUE		

EXAMPLE CATALOGUE NUMBER

RNF-100-3/64-BK (BLACK) -STK(1200mm)
(Standard length-1200mm)

CAT NO.	INSIDE DIAMETER (D)		WALL THICKNESS (W)	STANDARD LENGTH mm	SPOOL LENGTH m
	MIN mm A	MAX mm B	NOM RECOVERED mm		
RNF-100-3/64-colourcode-length	1.2	0.6	0.45	1200	300
RNF-100-1/16-colourcode-length	1.6	0.8	0.45	1200	300
RNF-100-3/32-colourcode-length	2.4	1.2	0.50	1200	150
RNF-100-1/8-colourcode-length	3.2	1.6	0.50	1200	150
RNF-100-3/16-colourcode-length	4.8	2.4	0.50	1200	150
RNF-100-1/4-colourcode-length	6.4	3.2	0.65	1200	75
RNF-100-3/8-colourcode-length	9.5	4.8	0.65	1200	121
RNF100-1/2-colourcode-length	12.7	6.4	0.65	1200	90
RNF-100-3/4-colourcode-length	19.0	9.5	0.75	1200	60
RNF-100-1-colourcode-length	25.4	12.7	0.90	1200	60
RNF-100-1-1/2-colourcode-length	38.0	19.0	1.00	1200	91
RNF-100-2-colourcode-length	51.0	25.4	1.15	1200	30
RNF-100-3-colourcode-length	76.0	38.0	1.25	1200	15
RNF-100-4-colourcode-length	102.0	51.0	1.40	1200	15
RNF-100-5-colourcode-length	127.0	63.5	1.52	1200	30

A = as supplied, B = after heating

APPROVALS

*UL File E35586	Def Stan 59-97 Type 2b
*CSA LR31929	MIL-DTL-23053/5 Class 1 (colours), (Clear) [exclude 1-3/4]
VG 95343 Part 5 Type A and B	BS 4G-198PART 3 11B
VDE 0341-Pt9005	

DWP/ATUM – ES1000/ES2000 – THIN WALL HEATSHRINK

Semi-flexible, general purpose adhesive-lined, moisture proof heatshrinkable tubing, with high shrink ratio. Designed to provide moisture proof sealing to a wide range of substrates such as electrical wire splices, cable jackets, wire breakouts and electrical components.



TECHNICAL DATA – ES1000/ES2000

- Operating Temperature -40°C to 135°C
- Minimum shrink temperature 110°C
- Maximum full recovery temperature 135°C
- Shrink ratio 4:1
- ES1000 Clear, ES2000 Black
- Adhesive lined

TECHNICAL DATA – DWP/ATUM

- Operating Temperature -55°C to 110°C
- Minimum shrink temperature 80°C
- Minimum full recovery temperature 110°C
- Shrink ratio 3:1
- Black (clear ATUM 40/13 only)
- Adhesive lined

APPLICATIONS

- Environmental sealing
- Cable insulation
- Connector insulation for control wiring

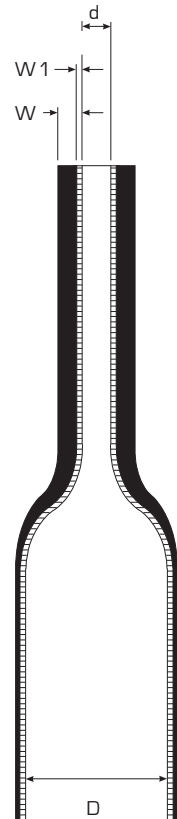
APPROVALS

- UL E85381 (Black only)
- MIL-DTL-23053/4 Class 3 (Black only)
- 3:1 Shrink ratio only (excludes sizes 9/3,19/6)
- VG 95343 (clear 3:1 only)
- VDE 0341/Pt. 9012 (clear 3:1 only)

3:1 SHRINK RATIO – DWP/ATUM

CAT NO.	INSIDE DIAMETER (D) mm		WALL THICKNESS (W)		STANDARD LENGTH mm
	MIN A	B	RECOVERED (NOM) mm	COLOUR	
DWP-125-1/8-0-STK	3.2	0.6	1.02-0.5	Black	1200
DWP-125-3/16-0-STK	4.8	1.5	1.40-0.5	Black	1200
DWP-125-1/4-0-STK	6.4	2.0	1.45-0.5	Black	1200
DWP-125-3/8-0-STK	9.5	3.0	1.65-0.6	Black	1200
DWP-125-1/2-0-STK	12.7	4.0	1.78-0.7	Black	1200
DWP-125-3/4-0-STK	19.0	6.0	1.90-0.8	Black	1200
DWP-125-1-0-STK	25.4	8.0	2.50-1.0	Black	1200
DWP-125-1-1/2-0-STK	32.0	11	2.50-1.0	Black	1200
ATUM-3/1-0-STK	3	1	1.00-0.5	Black	1200
ATUM-6/2-0-STK	6	2	1.00-0.5	Black	1200
ATUM-9/3-0-STK	9	3	1.40-0.6	Black	1200
ATUM-12/4-0-STK	12	4	1.75-0.7	Black	1200
ATUM-19/6-0-STK	19	6	2.25-0.8	Black	1200
ATUM-24/8-0-STK	24	8	2.50-1.0	Black	1200
ATUM-40/13-X-STK	40	13	2.50-1.0	Clear	1200
ATUM-52/13-0-STK	52	13	2.54-1.0	Black	1200

A = as supplied, B = after heating



4:1 SHRINK RATIO – ES1000/ES2000

CAT NO.	INSIDE DIAMETER (D) mm		WALL THICKNESS (W)	COLOUR	STANDARD LENGTH mm
	MIN A	MAX B	RECOVERED (NOM) mm		
ES1000-NO.2-B7-X-STK	7.4	1.6	1.52	Clear	1200
ES1000-NO.3-B7-X-STK	10.8	2.4	1.91	Clear	1200
ES1000-NO.4-B7-X-STK	17.7	4.4	2.41	Clear	1200
ES2000-NO.2-B8-O-STK	7.4	1.6	1.52	Black	1200
ES2000-NO.3-B8-O-STK	10.8	2.4	1.91	Black	1200

A = as supplied, B = after heating

MWTM – MEDIUM WALL HEATSHRINK

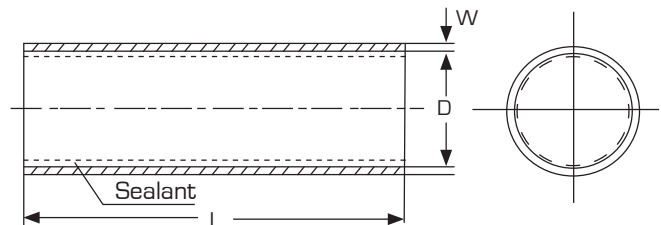
Raychem MWTM tubing is fast and easily installed, and has proven its long term reliability in harsh climatic conditions and polluted environments.

TECHNICAL DATA

- Operating Temperature range -40°C to 120°C
- Shrink ratio 3:1
- Adhesive lined
- UV resistant
- Voltage class 1kV
- Sealant lined
- Halogen free

APPLICATIONS

- Fast cost effective way to waterproof joints
- Low voltage underground jointing and terminations
- Sealing of lugs and glands
- Resistant to chemicals, corrosion and decay



CAT NO.	APPLICATION RANGE DIA. mm	INSIDE DIAMETER mm (D)		WALL THICKNESS mm (W)		STANDARD LENGTH (L) mm
		MIN A	MAX B	MIN A	MAX B	
MWTM-10/3-1200/5	3.5-9.0	10	3	0.3	1.0	1200
MWTM-16/5-1200/5	5.5-14.5	16	5	0.3	1.4	1200
MWTM-25/8-1200/5	9.0-22.5	25	8	0.4	2.0	1200
MWTM-35/12-1200/5	13.0-31.5	35	12	0.4	2.0	1200
MWTM-50/16-1200/5	18-45.0	50	16	0.5	2.0	1200
MWTM-63/19-1200/5	21.0-57.0	63	19	0.6	2.4	1200
MWTM-75/22-1200/5	24.0-68.0	75	22	0.6	2.7	1200
MWTM-85/25-1200/5	28-77.0	85	25	0.6	2.8	1200
MWTM-95/29-1200/5	32.0-86.0	95	29	0.7	3.1	1200
MWTM-115/34-1200/5	37.0-104.0	115	34	0.7	3.1	1200
MWTM-140/42-1200/5	46.0-126.0	140	42	0.7	3.1	1200
MWTM-160/50-1200/5	55.0-144.0	160	50	0.7	3.2	1200

A = as supplied, B = after heating

WCSM – HEAVY WALL HEATSHRINK

WCSM is a heatshrinkable heavy-wall tubing for insulating and sealing power cables and accessories. WCSM material is halogen free and UV resistant. WCSM tubing's mechanical strength enables immediate back-filling of cable trenches after jointing.

Widely used to insulate, protect and seal power cable joints, accessories and electrical connections.

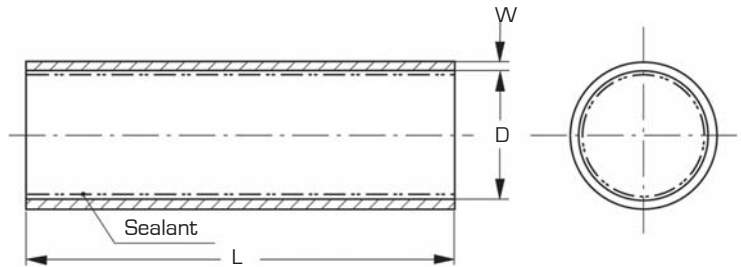


TECHNICAL DATA

- Operating Temperature range -40°C to 120°C
- Shrink ratio 4:1
- Adhesive wall
- Voltage class 1kV
- Black Colour
- Other lengths available on request.
- All lengths subject to standard cutting tolerances
- Sealant lined
- Halogen free

APPLICATIONS

- Fast cost effective way to waterproof joints
- Low voltage underground jointing and terminations
- Sealing of lugs and glands
- Resistant to chemicals, corrosion and decay



CAT NO.	APPLICATION RANGE DIAMETER mm	INSIDE DIAMETER (D) mm		WALL THICKNESS (W) mm		STANDARD LENGTH (L) mm
		MIN A	MAX B	NOM A	MAX B	
WCSM-12/3-1200/S	3.5-10	12	3	0.8	2	1200
WCSM-16/4-1200/S	4.5-14	16	4	0.9	2.4	1200
WCSM-24/6-1200/S	6.5-22	24	6	1	2.7	1200
WCSM-34/8-1200/S	9-31	33	8	1.3	4	1200
WCSM-48/12-1200/S	13-44	48	12	1.5	4.5	1200
WCSM-56/16-1200/S	17.5-50	56	16	1.5	4.4	1200
WCSM-70/20-1200/S	22-63	70	20	1.4	4.4	1200
WCSM-90/25-1200/S	27-81	90	25	1.3	4.3	1200
WCSM-110/30-1200/S	33-100	110	30	1.2	4.3	1200
WCSM-130/35-1200/S	38-118	130	35	1.2	4.3	1200
WCSM-160/50-1200/S	55-144	160	50	1	4.3	1200
WCSM-180/50-1200/S	55-162	180	50	1	4.3	1200

Note:

1. Dimensions in millimeters
A = as supplied

2. Max. Longitudinal change after free recovery: +5%/-10%
B = after heating

CRSM – HEATSHRINKABLE WRAP-AROUND REPAIR SLEEVE

CRSM wrap-arounds are a fast and permanent cable repair and sealing system. The repair sleeve is quickly fitted in place by means of its rail and channel closure.

TECHNICAL DATA

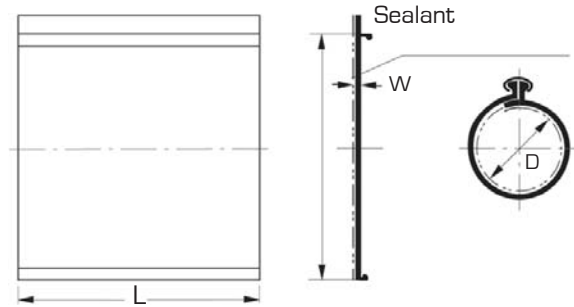
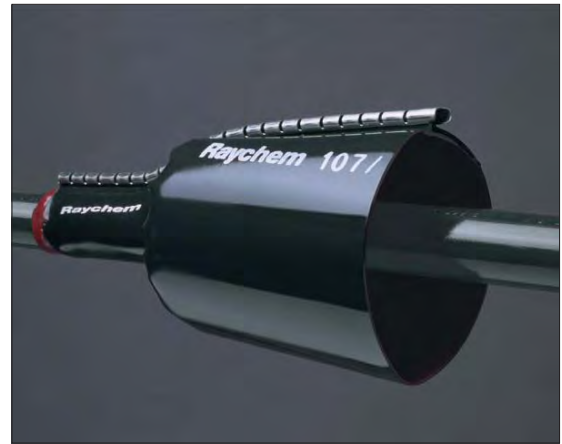
- Operating temperature range -40°C to 120°C
- Shrink ratio 3:1
- Sealant lined
- Halogen free

APPLICATIONS

- Repair cable sheath damage without cutting cable
- Underground jointing (and in tight areas)
- Sealing cable glands
- Abrasion corrosion and decay resistant
- IP68
- 100% waterproof
- Inner adhesive wall
- UV resistant
- Voltage class 1kV

Labour-saving installation. Fitting and sealing all in one step. Abrasion and corrosion resistant. Each size covers a range of cable sizes.

Raychem’s distinctive closure system, which incorporates a stainless steel channel slid over rails on the sleeve, keeps the wrap-around in place during installation but can be easily removed when the adhesive has set.



CAT NO.	APPLICATION RANGE DIAMETER mm	INSIDE DIA. [D] mm		WALL THICKNESS [W] mm		LENGTH [L] mm
		MIN A	MAX B	MIN A	MAX B	
CRSM-34/10-300	11-21	35	9	0.3	2.4	300
CRSM-53/13-300	17-32	54	15	0.3	2.0	300
CRSM-84/20-300	24-50	86	21	0.3	2.0	300
CRSM-107-29-300	31-65	108	27	0.3	2.0	300
CRSM-143-36-300	33-86	144	28	0.3	1.8	300
CRSM-198-55-300	56-120	203	50	0.3	2.1	300
CRSM-250-98-300	103-150	257	91	0.4	1.7	300
CRSM-34/10-1500	11-21	35	9	0.3	2.4	1500
CRSM-53/13-1500	17-32	54	15	0.3	2.0	1500
CRSM-84/20-1500	24-50	86	21	0.3	2.0	1500
CRSM-107/29-1500	31-65	108	27	0.3	2.0	1500
CRSM-143/36-1500	33-86	144	28	0.3	1.8	1500
CRSM-198/55-1500	56-120	203	50	0.3	2.1	1500
CRSM-250/98-1500	103-150	257	91	0.4	1.7	1500

* Other sizes available on request

Note:

1. Dimensions in millimeters
A = as supplied

2. Max. Longitudinal change after free recovery: 0 - +10%
B = after heating

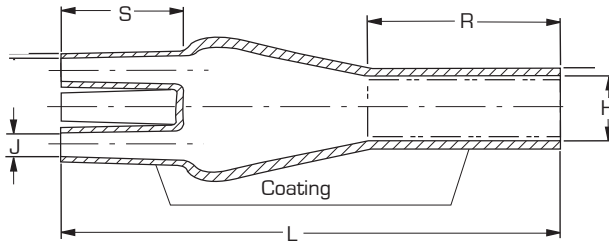
BREAKOUT BOOTS – HEATSHRINKABLE CABLE BREAKOUTS FOR POWER CABLES

Raychem low voltage breakouts are an easily installed, light weight insulation for sealing the crutches of plastic, paper and rubber insulated cables up to 1kV. Made from semi-rigid cross-linked

halogen free polyolefin, these medium wall breakouts also offer resistance to abrasion, weathering, and atmospheric pollution.

APPLICATIONS

- For sealing and insulating multi-core cables
- Resistant to corrosion and decay
- Waterproof
- IP68
- Inner adhesive wall
- UV Resistant
- Sealant lined



CAT NO.	NUMBER OF CORES	CONDUCTOR SIZE mm ²	INSIDE DIAMETER (D) mm				LENGTH mm		
			[H]		[J]		[L]	[R]	[S]
			MIN A	MAX B	MIN A	MAX B	B +/- 10%	B +/- 10%	B +/- 10%
302K333/S	2	4-25	28	9.2	15	4.1	90	-	25
302K224/S	2	35-150	48	32	22	7	172	-	70
302K466/S	2	185-300	86	42	40	17	200	-	75
402W533/S	3	4-35	38	13	16	4.2	103	45	28
402W516/S	3	50-150	63	22	26	9	180	85	40
402W526/S	3	185-300	95	28	44	13	205	90	45
402W248/S	3	400	115	45	52	22	240	100	60
402W439/S	3	630	170	60	60	30	252	90	66
502K033/S	4	4-35	45	16.5	14	3.4	98	71	25
502K046/S	4	35-70	45	19	20	7	165	75	40
502K016/S	4	70-150	75	25	25	9	217	100	44
502K026/S	4	185-300	100	31	40	13.5	223	103	51
603W035/S	4 + 1	16-185	68	26	30*	7*	182	75	40

*One of 5 outlets dim = 20/6

Note:

1. Dimensions in millimeters

2. The recommended application range is from 20% above the recovered diameter to 20% below the expanded diameter

A = as supplied

B = after heating

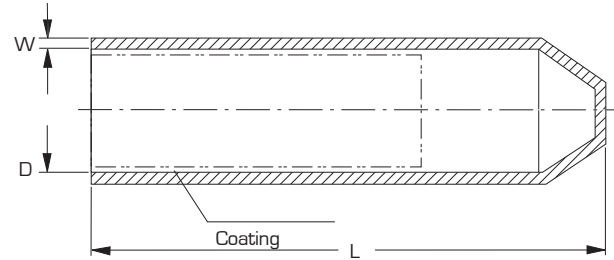
END CAPS – HEATSHRINKABLE CABLE END CAPS

Raychem Cable Caps shrink when heated to tightly fit a range of cable sizes and constructions. At the same time a special sealant also melts and flows under the shrinking action, gripping the cable and ensuring a high-integrity moisture seal.

Our advances in materials science ensure that these crosslinked halogen-free polymer products also provide high quality electrical insulation while at the same time resisting abrasion, weathering, and chemical attack.

APPLICATIONS

- Environmental sealing of all cable types
- Resistant to corrosion and decay
- Caps for pressurised and live sealing are available
- Operating temperature range -40°C to 120°C
- Inner adhesive wall
- Sealant lined



CAT NO.	APPLICATION RANGE mm	INSIDE DIAMETER (D) mm		LENGTH (L) mm B +15/-10%	WALL THICKNESS (W) mm	
		MIN A	MAX B		B	± 20%
102L011-R05/S	4.0-8.0	10	4	38	2.0	
102L022-S	8.0-17.0	20	7.5	55	2.8	
102L033-S	15.0-30.0	35	15	90	3.2	
102L044-S	30.0-45.0	55	25	143	3.9	
102L048-S	45.0-65.0	75	32	150	3.3	
102L055-S	65.0-95.0	100	45	162	3.8	
102L066-S	95.0-115.0	120	70	145	3.8	

Note: A = as supplied, B = after heating

DCPT – FLEXIBLE POLYOLEFIN TUBING

APPLICATIONS

- 2:1 Shrink ratio
- Earth Colours (green/yellow) for instant identification
- Flame retardant
- Flexibility: able to conform to irregular shapes
- Excellent physical, chemical and electrical properties
- Minimum shrink temperature: 95°C
- Minimum full recovery temperature: 120°C
- Operating temp range (-55°C to 135°C)
- Standard length 1.2m



CAT NO.	INSIDE DIAMETER		WALL THICKNESS		LENGTH mm
	MIN EXPANDED mm [D]	MAX RECOVERED mm [d]	FULLY RECOVERED [W] mm		
DCPT-3/1.5-45-STK	3.0	1.5	0.51		1200
DCPT-6/3-45-STK	6.0	3.0	0.58		1200
DCPT-10/5-45-STK	10.0	5.0	0.64		1200
DCPT-19/9-45-STK	19.0	9.0	0.76		1200
DCPT-26/13-45-STK	26.0	13.0	0.89		1200
DCPT-38/19-45-STK	38.0	19.0	1.00		1200

Note: D = as supplied d = after heating

TFER – HEATSHRINKABLE TEFLON TUBING

APPLICATIONS

- Operating temperature -67°C to 250°C
- Installation temp minimum 340°C
- Chemically inert
- Modified Teflon tubing
- Standard length 1.2m
- Colour: Clear



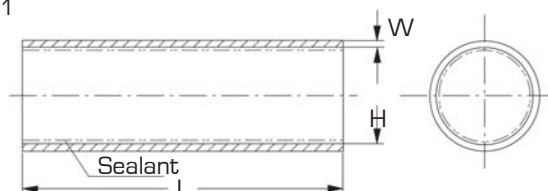
CAT NO.	INSIDE DIAMETER		WALL THICKNESS		LENGTH mm
	MIN EXPANDED mm [D]	MAX RECOVERED mm [d]	FULLY RECOVERED [W] mm		
TFER-5/64-X-STK	2.0	0.6	0.23		1200
TFER-1/8-X-STK	3.2	1.0	0.25		1200
TFER-3/16-X-STK	4.8	2.47	0.25		1200
TFER-1/4-X-STK	6.4	1.6	0.30		1200
TFER-3/8-X-XTK	4.4	0.30	0.30		1200
TFER-1/2-X-STK	12.7	3.7	0.38		1200

Note: D = as supplied d = after heating

FCSM – FLEXIBLE MEDIUM WALL HEATSHRINK TUBING

APPLICATIONS

- Electrical insulation
- Indoor or outdoor busbar insulation
- Corrosion protection
- Operating temp range -40°C to 120°C
- 15m roll size Shrink ratio 3:1
- Flame retardant
- Flexible



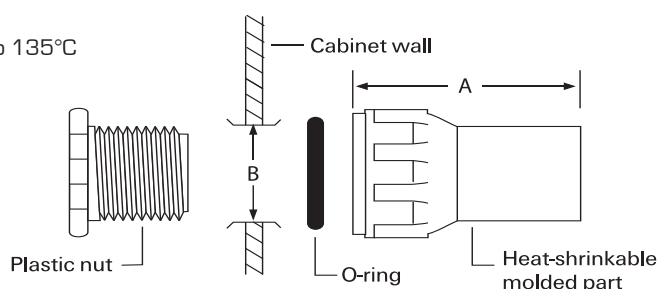
CAT NO.	APPLICATION RANGE	INSIDE DIA (H) mm		WALL THICKNESS FULL RECOVERY (W) mm	LENGTH (L) m
	mm	MIN	MAX		
FCSM-19/6-A/U-4	6.5-17.0	19	6	2.4	15
FCSM-28/9-A/U-4	10.0-25.0	28	9	3.2	15
FCSM-51/16-A/U-4	17.5-46.0	51	16	4.1	15

Note: A = as supplied B = after heating

CFTS – HEATSHRINK FEED THROUGH CABLE GLANDS

APPLICATIONS

- Sealing of bulkhead, equipment box and panel penetration
- Provides environmental seal and strain relief via heat activated adhesives
- Elastomeric 'O' ring with each part to accommodate irregularities on panel
- Operating temperatures - 55°C to 135°C



CAT NO.	CABLE DIAMETER mm	LENGTH (A) mm	RECOMMENDED HOLE SIZE (B) mm
CFTS-1	5-10	70	25
CFTS-2	6-17	70	25
CFTS-3	14-25	95	35
CFTS-4	20-37	114	51
CFTS-5	37-61	178	89

LVBT – LOW VOLTAGE BUSBAR TAPE

Tape is adhesive coated and when heated will shrink and seal to itself.

APPLICATIONS

- It is designed for areas of restricted access where tubing cannot be easily used
- LVBT is a general purpose, flexible, heatshrinkable insulating tape (adhesive coated)
- Colour: Black
- 1kV Voltage rating



CAT NO.	LENGTH m	WIDTH mm
LVBT-1-R	8	25
LVBT-2-R	8	50
LVBT-4-R	8	100

LVIT – FLEXIBLE LOW VOLTAGE INSULATION TUBING

APPLICATIONS

- Electrical insulation
- Indoor or outdoor busbar insulation
- Corrosion protection
- Operating temperature -40°C to 150°C
- Flame retardant



CAT NO.	APPLICATION RANGE mm	WALL THICKNESS mm	RECTANGULAR BUSBAR APP. RANGE mm	SPOOL SIZE m
LVIT-30/10-A/U-4	28-12	1.5	40-18	60
LVIT-75/25-A/U-4	70-28	1.5	100-43	30
LVIT-150/50-A/U-4	145-55	1.5	200-86	30

LV INLINE JOINTS FOR XLPE CABLES FOR APPLICATIONS UP TO 1KV



APPLICATIONS

- Single and multicore inline joint kits including mechanical connectors
- Complete range available
- Suitable for Al, Cu and Bi-Metal applications

LV MULTI-CORE INLINE JOINT KITS C/W MECHANICAL CONNECTORS

CAT NO.	DESCRIPTION	SIZE RANGE Cu CONDUCTORS mm ²	SIZE RANGE Al CONDUCTORS mm ²
LVJM-6/35-4	4 CORE LV INLINE JOINT KIT	6-35	6-35
LVJM-25/95-4	4 CORE LV INLINE JOINT KIT	25-70/95*	25-70/95*
LVJM-95/185-4	4 CORE LV INLINE JOINT KIT	95-185*	95-185*
LVJM-120/300-4	4 CORE LV INLINE JOINT KIT	120/300*	120/300*
LVJM-6/35-NS-4	3 CORE + NS LV INLINE JOINT KIT	6-35	6-35
LVJM-25/95-NS-4	3 CORE + NS LV INLINE JOINT KIT	25-70/95*	25-70/95*
LVJM-95/185-NS-4	3 CORE + NS LV INLINE JOINT KIT	95-185*	95-185*
LVJM-120/300-NS-4	3 CORE + NS LV INLINE JOINT KIT	120/300*	120/300*

Note: Other size ranges and custom configurations are also available * Pressed round

LV 1 CORE INLINE JOINT KITS C/W MECHANICAL CONNECTORS

CAT NO.	DESCRIPTION	SIZE RANGE Cu CONDUCTORS mm ²	SIZE RANGE Al CONDUCTORS mm ²
LVJM-6/35-1	1 CORE LV INLINE JOINT KIT	6-35	6-35
LVJM-25/95-1	1 CORE LV INLINE JOINT KIT	25-95	25-95
LVJM-95/240-1	1 CORE LV INLINE JOINT KIT	95-240	95-240
LVJM-120/300-1	1 CORE LV INLINE JOINT KIT	120-300	120-300

CRSM-CT – LV 1 CORE BRANCH JOINTS

APPLICATIONS

- Single phase branch joints for low voltage plastic cables (excludes connector)
- UV Resistant
- Voltage class 1kV
- Temperature range -40°C to 120°C
- Suitable for direct burial



CAT NO.	CONDUCTOR SIZE - MAIN mm ²	CONDUCTOR SIZE - TAP mm ²	CONNECTOR LENGTH mm	MAXIMUM JOINT LENGTH OPENING mm
CRSM-CT1	16-150	1.5-35	50	150
CRSM-CT2	50-300	35-120	100	200
CRSM-CT3	50-500	120-185	150	250

TPS JOINTS – INLINE

CAT NO.	CONNECTOR SIZE mm ²	CONDUCTORS
LVK01	6-16	2-4 CORES
LVK02	16-35	2-4 CORES

*Connector not included

LVTM – LV TERMINATION KITS FOR XLPE CABLES WITH MECHANICAL LUGS

APPLICATIONS

- UV Resistant (includes covering for phase and neutral conductors)
- Voltage class 1kV
- Temperature range -40°C to 120°C
- Indoor or outdoor use
- Full range of terminations available
- Complete with mechanical lugs suitable for Al, Cu and Bi-Metal terminations



CAT NO.	DESCRIPTION	SIZE RANGE Cu CONDUCTORS mm ²	SIZE RANGE Al CONDUCTORS mm ²
LVTM-16/70-4	4 CORE LV TERMINATION KIT	16-70	25-70
LVTM-95/185-4	4 CORE LV TERMINATION KIT	95-185*	95-185*
LVTM-120/240-4	4 CORE LV TERMINATION KIT	120-240	120-240*

*Pressed round

EPKJ – HEATSHRINKABLE LOW VOLTAGE JOINTS

1KV STRAIGHT JOINTS FOR PLASTIC INSULATED CONTROL CABLES

APPLICATIONS

- Armoured and unarmoured multi-core and multi-pair control cables
- Up to 1kV
- Duraseal connectors can be used with these joints (order separately)



CAT NO.	ARMOURED	CONDUCTOR SIZE mm O.D.	NUMBER OF CORES
EPKJ-C-11	NO	1-4	2-7
EPKJ-CA-11	YES	1-4	2-7
EPKJ-CA-12	YES	1-4	7-14
EPKJ-C-13	NO	1-4	15-21
EPKJ-CA-13	YES	1-4	15-21
EPKJ-CA-14	YES	1-4	22-40
EPKJ-CA-15	YES	1-4	41-75

1KV STRAIGHT JOINTS FOR PAPER CABLES

APPLICATIONS

- Paper insulated to paper insulated cables
- Up to 1kV
- Connectors not included

CAT NO.	CONDUCTOR SIZE mm ²	NUMBER OF CORES
EPKJ-PLA 3	16-35	4
EPKJ-PLA 4	35-50	4
EPKJ-PLA 5	70-150	4
EPKJ-PLA 6	185-300	4

1KV STRAIGHT JOINTS/TRANSITION FOR INSULATED CABLES

APPLICATIONS

- Paper to Polymetric cables
- A range of joints for connecting paper insulated armoured cables to XLPE armoured cables
- Connectors not included

CAT NO.	CONDUCTOR SIZE mm ²	NUMBER OF CORES
EPKJ-0828	16-35	4
EPKJ-0835	35-50	4
EPKJ-0842	70-150	4
EPKJ-0856	185-300	4

RAYVOLVE RVS – TOOL FREE LOW VOLTAGE JOINT SYSTEM

APPLICATIONS

- Outer environmental seal for unarmoured and neutral screened cables
- Resistant to corrosion and decay
- Single core joints
- No heat required

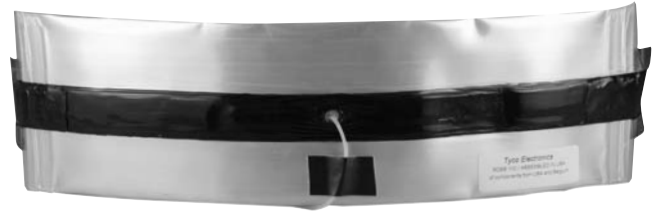


CAT NO.	CABLE OD mm	CABLE SIZE mm ²	SLEEVE LENGTH mm	UNIT
RVS-11	9 - 17	10 - 70	205	EA
RVS-12	12 - 23	50 - 120	240	EA
RVS-13	18 - 30	120 - 300	305	EA
RVS-14	25 - 38	300 - 500	355	EA

RAYFLATE – DUCT SEALING SYSTEM

APPLICATIONS

- For power cables
- For two or more cables, sealing clips are required
- Inflation tool is TDUX-IT-16 for purchase or hire
- Canisters of compressed air or CO² are compatible
- Each Rayflate seal covers a large range of cable and duct diameters
- Rayflate seals can be installed when water is still flowing out of the duct – thus saving valuable installation time
- Use not only for new cable installations but also for existing applications
- Rayflate seals can be quickly and easily removed from a duct or pipe by deflation



CAT NO. DUCT SIZE mm	RDSS45 CABLE DIA. mm	RDSS60 CABLE DIA. mm	RDSS75 CABLE DIA. mm	RDSS100 CABLE DIA. mm	RDSS125 CABLE DIA. mm	RDSS150 CABLE DIA. mm
32.5	0 - 14	-	-	-	-	-
35	0 - 18	-	-	-	-	-
40	0 - 27	-	-	-	-	-
45	0 - 32	0 - 18	-	-	-	-
50	-	0 - 30	-	-	-	-
55	-	0 - 38	0 - 28	-	-	-
60	-	0 - 45	0 - 30	-	-	-
65	-	-	0 - 40	-	-	-
70	-	-	0 - 46	-	-	-
75	-	-	0 - 56	0 - 45	-	-
80	-	-	-	0 - 52	-	-
85	-	-	-	0 - 60	-	-
90	-	-	-	0 - 66	-	-
95	-	-	-	0 - 74	-	-
100	-	-	-	0 - 80	0 - 65	-
105	-	-	-	0 - 85	0 - 75	-
110	-	-	-	0 - 90	0 - 83	-
115	-	-	-	-	0 - 91	-
120	-	-	-	-	0 - 95	-
125	-	-	-	-	0 - 103	60 - 100
130	-	-	-	-	-	60 - 107
135	-	-	-	-	-	60 - 112
140	-	-	-	-	-	60 - 118
145	-	-	-	-	-	60 - 123
150	-	-	-	-	-	60 - 129