



LV JUICE

#MI3100SPROMO

EUROTESTEASI MULTIFUNCTION INSTALLATION TESTER PROMO KIT

#MI3100S

Metrel EuroTest EASI-S Installation Tester

The MI3100S is a fast, accurate & easy-to-use multifunctional measuring instrument.

FEATURES

- Built-in help screens for referencing on site
- Built-in fuse tables for automatic evaluation of the line/loop impedance result
- Built-in charger & rechargeable batteries
- Monitoring of all three voltages in real-time
- Automatic polarity reversal on continuity test
- Loop impedance test without tripping the 30mA RCD
- Automated RCD testing procedure

#MD9230

Metrel Current Clamp

- Auto-ranging on all ranges
- LCD display with backlight, 3-3/4 digit, 4000 count
- Data & peak hold functions
- Acoustic signalling on continuity test
- 50 mm jaw opening
- Resistance measurement up to 40.0 MΩ
- Capacitance measurement from 500 nF to 3000 μF
- CAT III/600 V overvoltage category

#MARTL78

Martindale 50m Green R2 Continuity Wire on Reel

#BENTROD

Bent Earth Peg

\$1795.00

PLUS GST



This Month

NEW FIRETHERM INTUCOLLARS

PAGE 3

CRIMP TOOL DEALS

PAGE 6

ECOLIGHT DOMESTIC LAMPS

PAGE 7

FREE SOUR COLA BOTTLES

WHILE STOCKS LAST

When you spend over \$300 (excl GST) on one invoice this month





NEW PRODUCT! AIRSTOP WEATHER SEALS BY ISOCELL

NEW AIRSTOP WEATHER SEALS



BRANZ Appraised
Appraisal No. 931 [2016]

- #AIRSTOP812 AIRSTOP SEALING COLLAR 8-12MM
- #AIRSTOP5050 AIRSTOP SEALING COLLAR 50-70MM
- #AIRSTOP100110 AIRSTOP SEALING COLLAR 100-110MM

ISOCELL

AIRSTOP Cable Sleeves guarantee that your construction is wind-tight and airtight. Designed to enable vapour barriers and other materials to fulfill their purpose as an airtight layer, these one piece adhesive collars are used to seal joints at cable entry points and openings for conduits in buildings.

Sizes available for 8mm to 165mm diameter.

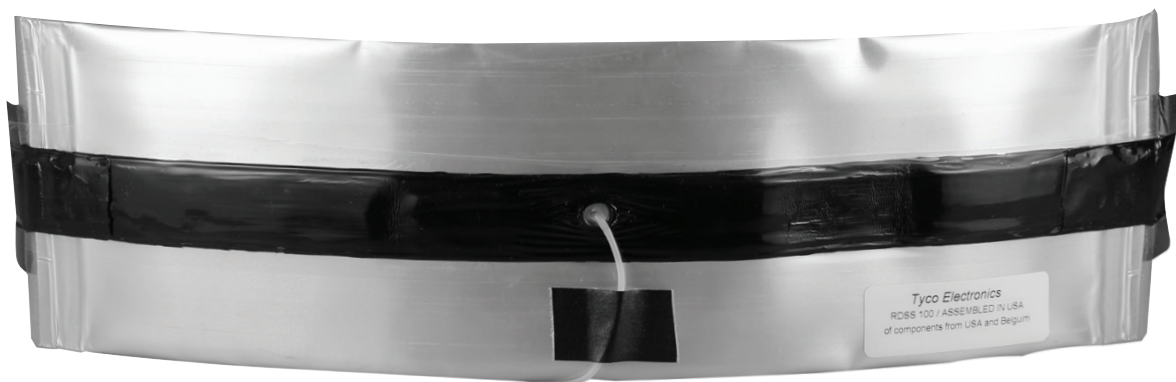
ADVANTAGES

- Extremely flexible
- Resistant to ageing
- Integrated sealing plaster for airtight adhesion
- Rubber heat-resistant up to 160°C (short term)

RDSS - RAYFLATE DUCT SEALING SYSTEM

APPLICATIONS

- For power cables
- For three or more cables, sealing clips are required
- Inflation tool is TDUX-IT-16 for purchase or hire
- Canisters of compressed air or CO₂ are compatible
- Each Rayflate seal covers a large range of cable and duct diameters
- Rayflate seals can be installed when water is still flowing out of the duct – thus saving valuable installation time
- Use not only for new cable installations but also for existing applications
- Rayflate seals can be quickly and easily removed from a duct or pipe by deflation



Raychem
from TE Connectivity



All Specials and Products featured in TRANSNET JUICE are available from all good electrical wholesalers.



NEW PRODUCT! FIRE THERM INTUCOLLAR



Used to seal plastic pipes as they pass through fire compartment walls and floors

Firetherm intucollars consist of a metal shell produced in two hinged halves, lined with intumescent material. They are designed to be placed around combustible pipes and fixed to compartment walls and floors with all steel anchors (supplied) in order to provide up to four hours of fire protection.

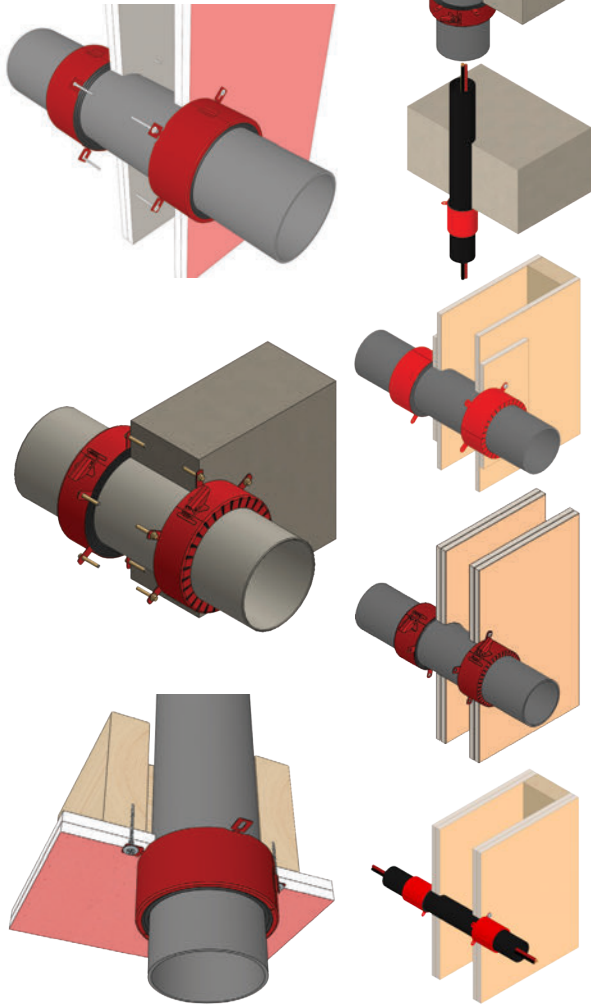
In a fire, the intumescent lining of the metal collar expands and crushes the heat softened plastic pipe leaving a potential path for fire completely sealed.

Features

- Ultra-slim flange and body design ensures easy installation in awkward situations
- Simple single click clasp
- Supplied with blockwork fixings
- 100 times minimum expansion of active product
- Water resistant
- Non-corrosive: inert product

Applications

Used to seal plastic (PVC-u, PVC, C-PVC, PP, PE, HDPE, PPR, Friatherm and ABS) pipes as they pass through fire compartment walls and floors.



Integrity
up to
240
minutes

Insulation
up to
240
minutes



#FTCOLLAR40



#FTCOLLAR100

Available in sizes up to 250mm





YOU DON'T CHANGE A WINNING COMBINATION

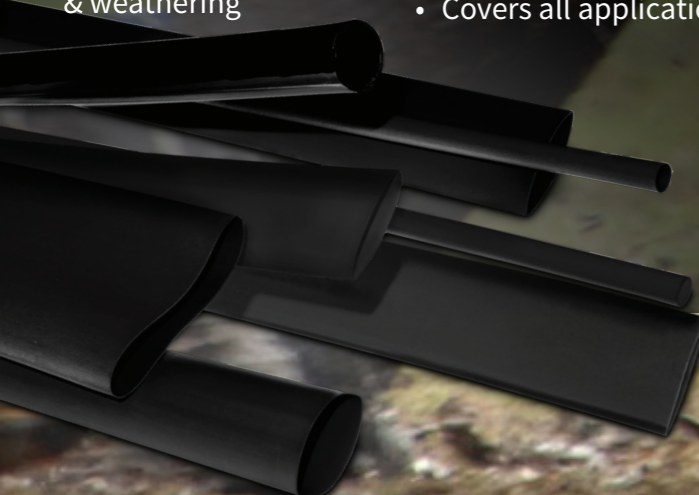
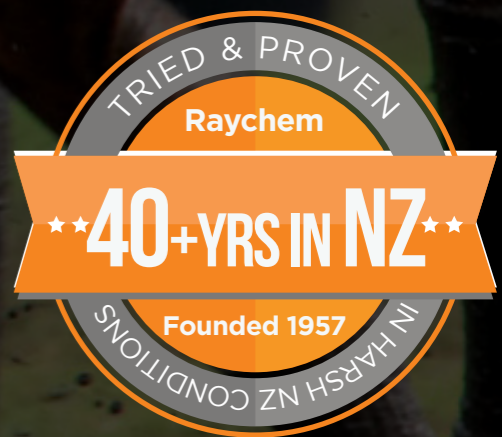
RAYCHEM HEATSHRINK

- Resistant to abrasion, atmospheric pollution, & weathering
- Made from high quality cross-linked polyolefin
- Covers all applications

UTILUX CONNECTORS

- Shearhead bolts for correct connection every time
- No special tools required
- Al, Cu & Bimetallic connections
- Range taking

In an industry where connections really do count, we want ours to be as simple and effective as possible. Our Raychem Heatshrink and Utilux Connectors have been designed to work together seamlessly, with traceability from the sourcing of raw materials right through to the finished products. TE does all their own R&D and manufactures to their exacting standards using their own parts, so they know how to make the products you rely on the perfect fit.



Raychem

PLUS

UTILUX

PROUD SUPPORTERS OF



EVERY CONNECTION COUNTS





#102/1 TERMINAL CRIMP TOOL

Ratchet type tool for pre-insulated and supergrip terminals. The ratchet ensures a complete crimp every time. A must have tool for every tradesman.

Crimp Type: Oval on conductor/diamond on insulation

Length: 230mm

Weight: 550g



*Size Range
Red, Blue & Yellow
Pre-Insulated
0.5-5.5mm²*

UTILUX

Product #102/1

\$79.00
+ GST

#103/1 COPPER LUG & LINK CRIMP TOOL

Ratchet type tool for un-insulated Copper lugs and links (CG & CK series). The ratchet ensures a complete crimp every time.

Crimp Type: Indent

Length: 230mm

Weight: 550g



*Size Range
0.5-16mm²*

UTILUX

Product #103/1

\$79.00
+ GST

SABC6 BOOTLACE CRIMP TOOL

The Die-less Bootlace Ferrule Crimper - Unique crimp action, which automatically crimps a range of terminal sizes. Insert the wire and ferrule, the tool self adjusts and crimps. Ratchet control for crimp consistency.



*Size Range
0.08-6mm²*

Product #SABC6

\$79.00
+ GST



NEW GENERATION LEDLA DOMESTIC LIGHTS

For energy savings of up to 80%* when compared to traditional Halogen lighting options, these LED lamps are the perfect alternative. Simple to retrofit, this range has been designed to fit into existing standard fittings.

Manufactured to the highest quality these lights significantly reduce energy consumption with excellent light output efficiency. This range also offers the added safety of low running temperatures and no glass in the construction.

FEATURES

- **80% more efficient** than traditional lamps*
- Simple to retrofit into existing standard fittings
- **No glass** in the construction of these lamps
- **Environmentally friendly** - no mercury
- Warm white (3000K) & cool white (5700K) colour temperatures available
- Excellent light uniformity
- **Lower operating temperature** than traditional lamps
- Dimmable options available
- Up to 15 years life**

LEDLA-ES/BC

9W

Available in 220° & 300°
Bayonet Cap
or Edison Screw

GU10/MR16

6W

38° beam angle

LEDLA-MR16XX

\$5.95

PLUS GST EA.

LEDLA-GU10XXDIM

\$8.95

PLUS GST EA.

LEDLA-9xxXXDIM

\$10.75

PLUS GST EA.

LEDLA-9xxXXDIM300

\$12.55

PLUS GST EA.

XX - Use suffix CW for Cool White or WW for Warm White
xx - Use suffix BC for Bayonet Cap or ES for Edison Screw



*Energy efficient LED lamps are designed to use less energy than standard incandescent or halogen lamps, in some cases saving you over 80%
**Based on 3 hours usage per day

BREAK NEW GROUND

A Locator for Every Situation



TransNet New Zealand Ltd

Auckland

78 Cryers Road
East Tamaki
Auckland
NEW ZEALAND
Ph 0800 442 182
Fax 0800 442 183
PO Box 39 383
Howick, Auckland

Wellington

18 Sydney Street
Petone
Wellington
NEW ZEALAND
Ph 04 576 2530
Fax 04 576 0040
PO Box 39 383
Howick, Auckland

NEW ZEALAND

sales@transnet.co.nz

TransNet Tonga

Ma'ufanga

Small Industries
Ma'ufanga
TONGA
Ph +67 627 939
Fax +67 627 976
PO Box 2932
Nukualofa

TONGA

transnet@kalianet.to

The Vivax Metrotech range of locators is used by many utilities in Australia from the power, water, plumbing, and telecoms sectors. Telstra, a huge operator of a number of different Vivax Metrotech locators, has been using these locators for a variety of applications for many years.

Telstra uses the vLoc Pro2 and vLoc ML2 for their main locating work. The vLoc ML2 is able to detect the EMS markers that are used with services that are not easily traceable, such as non-shielded fibre. The vLoc ML2 is capable of locating both conductive services as well as the EMS markers, and can be set to operate in dual mode and in separate operation.

The vLoc Pro2 is used as a main line cable locator, and by adding the A-frame they enable the vLoc Pro2 to become a very efficient sheath fault locator. These faults are caused by damage to the insulation, allowing the metallic sheath or internal conductor to come in contact with the ground. The system allows the operator to not only find the fault but also to check that they are still over the cable path.

Telstra also uses the VM550 as a safety tool for their construction



guys in order to avoid any cable strikes in the construction field. The VM550 is a very compact cable avoidance safety tool, and can be carried behind the driver's seat when space is at a premium. It has a simple four button operation and has proved very popular.

The vScam M is also very popular with the field service area not only as a cable locator, but also a pit lid locator using the metal detector side of the unit. Telstra has found the vScan M to be a very versatile and easy-to-use locator. Some of the standard features of the vScan M allow it to be used in far more complicated areas than was originally determined. The metal detecting side of the unit has proved very good in the areas where gardeners and landscapers have buried the pit lids.

CONTACT US FOR MORE INFORMATION ABOUT THIS RANGE



**VIVAX
METROTECH**

TransNet NZ Ltd has made every reasonable effort to ensure the accuracy of this information and it is to the best of our knowledge correct and reliable. Under no circumstances does this constitute an assurance of any particular quality or performance and users should independently evaluate the suitability of products for their desired application. All information in this publication including pricing, drawings, illustrations, images and graphic designs are reflections of our current understanding. TransNet NZ Ltd reserves the right to make any adjustment to this information at any time. Our liability for the products outlined in this publication is set forth in our standard terms and conditions of trade. In case of any potential ambiguities or questions, please contact us for clarification.



NEW ZEALAND OWNED