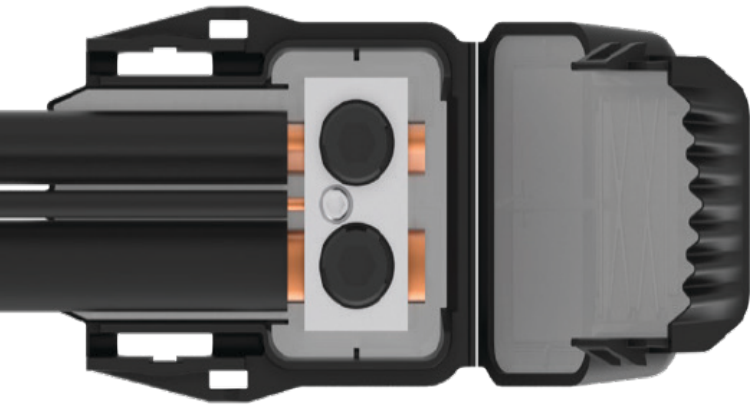


GELBOX CONNECTOR KIT

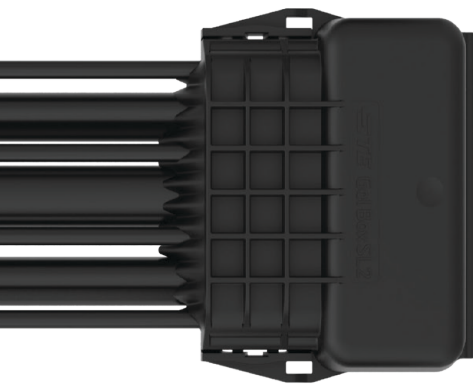
- FOR SEALED LV & ELV ELECTRICAL CONNECTIONS



TE Connectivity's (TE) GelBox kits offer protection, insulation and high-quality sealing for fast, easy and safe cable connections.

The robust yet compact design was engineered to handle harsh environments and offer a wide application range for electrical connections, covering main cables from 6 to 70 mm² as well as service cables from 1.5 mm² to 4 mm².

The GelBox kits feature the revolutionary PowerGel sealing technology, which provides an excellent moisture sealing over a wide temperature range (-40°C to over +90°C). PowerGel is halogen-free and has an unlimited shelf-life.



GelBox kits can be snap-closed by hand thanks to the flexible wave-like gel barriers and can be easily re-opened with a screwdriver to check the connections. If required, GelBox can be easily fixed inside the poles, pillars or pits using a standard cable tie.

A versatile low voltage or extra low voltage electrical connection system with a wide variety of applications Eg; Streetlights, Loop In/Out and feed to luminaires, Extra LV feeds within pillar boxes.



KEY FEATURES

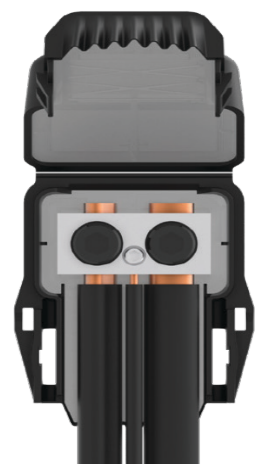
- Quick, easy and clean installation
- Reliable water protection IP X8
- Compact design with wide application range for 6 mm² to 70mm² main cables
- Loop-in/loop-out or branching kits available
- Boxes can be re-opened for easy maintenance
- Halogen-free and UV-resistant
- Unlimited shelf-life, environment-friendly, no labelling requirements
- Safe and easy installation - avoids tape and potential exposed live terminals






AUTHORIZED DISTRIBUTOR

REVOLUTIONARY POWERGEL

Provides quick and easy installation and an excellent moisture seal over a wide temperature range.



CAT NO.		DESCRIPTION	APPLICATION RANGE	DIMENSIONS (LxWxH)
GELBOX-T2-1		GelBox Connector, 2 way	2 x 6-70 mm ² / 1 x 1.5-4 mm ²	66 x 50 x 35 mm
GELBOX-T3-4		GelBox Connector, 3 way	3 x 6-70 mm ² / 4 x 1.5-4 mm ²	66 x 70.5 x 35 mm
GELBOX-T4-4		GelBox Connector, 4 way	4 x 6-70 mm ² / 4 x 1.5-4 mm ²	66 x 91 x 35 mm