



Raychem GelWrap Wrap-Around Splice Cover (1000V)

KEY FEATURES

- Simply wrap and snap the sleeve on any cable in the use range
- Easy and quick to install
- For splice cover, cable re-jacketing, underground or overhead applications
- Closure sleeves are compatible with solid dielectric cable insulations

TE Connectivity's (TE) GelWrap closure sleeves quickly and conveniently, insulate and seal buried electrical connections rated up to 1000 volts. The robust, yet compact, design is engineered to handle the harsh environments of direct burial and manhole applications. GelWrap sleeves are equally well suited for insulation and jacket repair.

PowerGel sealing material was specifically developed for the electrical power industry. This unique hydrophobic gel material provides an excellent moisture seal over wide operating temperature ranges (-40°C to 95°C).

Other common uses for GelWrap sleeves

- LV cable repair splices
- MV cable jacket repair
- MV splice re-jacketing
- Elbow sealing sleeve

Raychem
from TE Connectivity

Maximum Mechanical Connector Dimensions:

Figure (A)

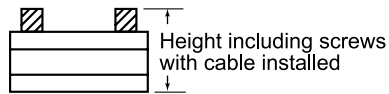
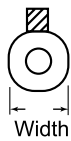


Figure (B)



Product Selection Information: Dimensions in inches (millimeters)

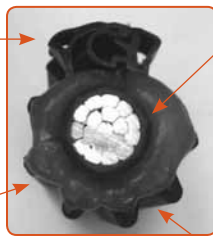
Kit Description	Sleeve Length	Conductor Size	Maximum Connector Opening	General Use Diameter Range
GelWrap-18/4-100	4.0 (100)	#12 - 4/0 (4 - 95)	1.0 (25)	0.15 - 0.70 (4 - 8)
GelWrap-18/4-150	6.0 (150)	#12 - 4/0 (4 - 95)	3.0 (75)	0.15 - 0.70 (4-18)
GelWrap-18/4-200	8.0 (200)	#12 - 4/0 (4 - 95)	5.0 (125)	0.15 - 0.70 (4-18)
GelWrap-18/4-250	10.0 (250)	#12 - 4/0 (4 - 95)	7.0 (175)	0.15 - 0.70 (4-18)
GelWrap-18/4-300	12.0 (300)	#12 - 4/0 (4 - 95)	9.0 (225)	0.15 - 0.70 (4-18)
GelWrap-33/10-150	6.0 (150)	#2 - 500 (35 - 240)	2.0 (50)	0.40 - 1.30 (10-33)
GelWrap-33/10-200	8.0 (200)	#2 - 500 (35 - 240)	4.0 (100)	0.40 - 1.30 (10-33)
GelWrap-33/10-250	10.0 (250)	#2 - 500 (35 - 240)	6.0 (150)	0.40 - 1.30 (10-33)
GelWrap-33/10-300	12.0 (300)	#2 - 500 (35 - 240)	8.0 (200)	0.40 - 1.30 (10-33)
GelWrap-33/10-350	14.0 (350)	#2 - 500 (35 - 240)	10.0 (250)	0.40 - 1.30 (10-33)
GelWrap-50/20-200	8.0 (200)	250 - 750	2.0 (50)	0.80 - 1.50 (20-38)
GelWrap-50/20-250	10.0 (250)	250 - 750	4.0 (100)	0.80 - 1.50 (20-38)
GelWrap-50/20-300	12.0 (300)	250 - 750	6.0 (150)	0.80 - 1.50 (20-38)
GelWrap-50/20-350	14.0 (350)	250 - 750	8.0 (200)	0.80 - 1.50 (20-38)
GelWrap-50/20-400	16.0 (400)	250 - 750	10.0 (250)	0.80 - 1.50 (20-38)

Product Selection Information: UL Listed - Dimensions in inches (millimeters)

Kit Description	Sleeve Length	1000V Cable Range	Maximum Connector Opening	Max. Compression Connector Diameter	Maximum Mechanical Connector Dimensions Height (A)	Maximum Mechanical Connector Dimensions Width (B)
GelWrap-18/4-150UL	6.0 (150)	#14-4/0 AWG	2.0 (50)	0.85 (22)	1.2 (30)	1.1 (28)
GelWrap-18/4-200UL	8.0 (200)	#14-4/0 AWG	4.0 (100)	0.85 (22)	1.2 (30)	1.1 (28)
GelWrap-18/4-250UL	10.0 (250)	#14-4/0 AWG	6.0 (150)	0.85 (22)	1.2 (30)	1.1 (28)
GelWrap-18/4-300UL	12.0 (300)	#14-4/0 AWG	8.0 (200)	0.85 (22)	1.2 (30)	1.1 (28)
GelWrap-18/4-350UL	14.0 (350)	#14-4/0 AWG	10.0 (250)	0.85 (22)	1.2 (30)	1.1 (28)
GelWrap-18/4-400UL	16.0 (400)	#14-4/0 AWG	12.0 (300)	0.85 (22)	1.2 (30)	1.1 (28)
GelWrap-18/4-450UL	18.0 (450)	#14-4/0 AWG	14.0 (350)	0.85 (22)	1.2 (30)	1.1 (28)
GelWrap-18/4-500UL	20.0 (500)	#14-4/0 AWG	16.0 (400)	0.85 (22)	1.2 (30)	1.1 (28)
GelWrap-18/4-550UL	22.0 (550)	#14-4/0 AWG	18.0 (450)	0.85 (22)	1.2 (30)	1.1 (28)
GelWrap-18/4-600UL	24.0 (600)	#14-4/0 AWG	20.0 (500)	0.85 (22)	1.2 (30)	1.1 (28)

Note: For other sizes or application, a minimum seal length is required on each side of connector opening or jacket damage.

Snap-lock made of impact resistant polypropylene provides secure installation. Latch is geometrically designed to provide easy installation, even when wearing insulated gloves.



Silicone gel is a high dielectric strength insulation that completely encapsulates the connection. The result is an excellent water seal. PowerGel sealing gel is specially formulated for high temperature environments.

Both the gel and housing are UV resistant and suitable for overhead applications.

Elastomer cover material combines outstanding tear strength, abrasion resistant, and chemical resistance with excellent flexibility and range-taking.

Use these Guidelines for Minimum Seal Distance:

- GelWrap 18/4 Series 1.5" (38 mm)
- GelWrap 33/10 Series 2.0" (51 mm)
- GelWrap 50/20 Series 3.0" (75 mm)

Installation Instructions



1. Center GelWrap sleeve over connector.



2. Wrap sleeve around connector and shut snap locks over entire length of sleeve.



3. Install cable ties at outermost notches of snap lock. Splice is complete.

Product Performance

The TE GelWrap sleeve meets the following requirements:

Testing	Test Conditions
ANSI C119.1 - 1986	600V insulated underground
Chemical Resistance	Fluid immersion, 168 hours @ 23° C, 75% elongation retention minimum <ul style="list-style-type: none"> - 10W-40 motor oil - 10% hydrochloric acid - 15% sodium chloride - 20% sodium hydroxide - ETX 60280 antifreeze (1000 hours)
Accelerated Aging	1000 hours @ 135° C <ul style="list-style-type: none"> - 93% retention tensile strength - 82% retention elongation at break

TE Technical Support Center

- USA: +1 (800) 327-6996
- Canada: +1 (905) 475-6222
- Mexico: +52 (0) 55-1106-0800
- Latin/S. America: +54 (0) 11-4733-2200
- UK: +44 (0) 800-267666
- France: +33 (0) 1-3420-8686
- Netherlands: +31 (0) 73-6246-999
- China: +86 (0) 400-820-6015

energy.te.com

© 2005, 2007, 2009, 2012 Tyco Electronics Corporation, a TE Connectivity Ltd. Company. All Rights Reserved.

1309100 E157 04/2012

GelWrap, PowerGel, Raychem, TE Connectivity and TE connectivity (logo) are trademarks. Other logos, product and/or company names might be trademarks of their respective owners.



While TE has made every reasonable effort to ensure the accuracy of the information in this brochure, TE does not guarantee that it is error-free, nor does TE make any other representation, warranty or guarantee that the information is accurate, correct, reliable or current. TE reserves the right to make any adjustments to the information contained herein at any time without notice. TE expressly disclaims all implied warranties regarding the information contained herein, including, but not limited to, any implied warranties of merchantability or fitness for a particular purpose. The dimensions in this catalog are for reference purposes only and are subject to change without notice. Specifications are subject to change without notice. Consult TE for the latest dimensions and design specifications.