



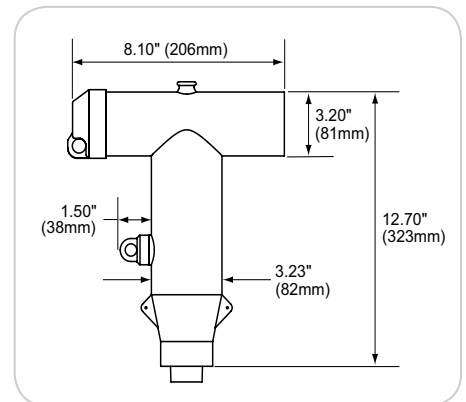
Raychem ELB-15/28 Series 600/900 Amp 15/28 kV Class T-Body Elbow Connector

KEY FEATURES

- Peroxide cured EPDM rubber ensures low tension set and high dielectric strength
- 100% factory production tested for partial discharge and AC Hipot per IEEE 386
- Optional capacitive test point provided on elbow
- Fits 15/28 kV cables up to 1250 kcmil
- Molded semiconducting shield provides ground shield continuity per the requirements of IEEE 592
- Meets IEEE 386-2006 specification requirements
- 900A capability is available

The ELB-15/28 elbows are designed to terminate underground cables to high-voltage apparatus such as transformers and switchgear. They are fully shielded and fully submersible and meet the requirements of IEEE Standard 386. They are interchangeable with other manufacturers' products that conform with this industry standard.

They are designed for use on extruded (XLPE or EPR) solid dielectric cable. The conductor range is from 1/0 AWG to 1250 kcmil for aluminum or copper conductors with insulation diameters from .640" to 1.965". The ELB-15/28-610 and ELB-15/28-910 elbow has a capacitive test point molded into the elbow body which provides a means of sensing voltage and provides an attachment point for test point fault indicators. 900 A ratings can be achieved by ordering the kit with a copper ShearBolt terminal.



Raychem
from TE Connectivity

Optional ShearBolt Terminal

As an option, the elbow can also be ordered with TE Connectivity's new line of Aluminum or Copper ShearBolt Terminals. These are range taking mechanical connectors that will accommodate a conductor range from #2 compact to 1250 kcmil stranded, Class B.

The ShearBolt Terminal design incorporates shear head bolts, which ensures that the correct torque is applied to each bolt and consequently the optimal contact force is generated

to minimize connection resistance. Eliminating the need for crimp tooling and dies, they are therefore ideal when installation space is confined.

Ratings

Voltage Class 15/28 kV
 Max Rating Phase-to-Ground 16.2 kV
 AC 1 Minute Withstand 45 kV
 DC 15 Minute Withstand 88 kV
 BIL and Full Wave Crest 140 kV
 Minimum Corona Level 21.5 kV (3pC)
 Continuous 600 A rms
 24 Hour Overload 1,000 A rms
 Momentary:
 25,000 A symmetrical 10 cycles
 10,000 A symmetrical 3.00 sec

100% Production Test

Minimum Corona Level 19 kV (3pC)
 AC 1 Minute Withstand 40 kV

Ordering Formula



1	Current Rating Test Point Code
600	= 600 AMP WITHOUT test point
610	= 600 AMP WITH test point
900	= 900 AMP WITHOUT test point
910	= 900 AMP WITH test point

2	Cable Insulator O.D. Range	
Code	Inches	mm
A	.640 - .760	16.3 - 19.3
B	.720 - .845	18.3 - 21.5
C	.785 - .970	19.9 - 24.6
D	.910 - 1.065	23.1 - 27.1
E	.980 - 1.140	24.9 - 29.0
F	1.080 - 1.280	27.4 - 32.5
G	1.220 - 1.420	31.0 - 36.1
H	1.360 - 1.560	34.5 - 39.6
J	1.480 - 1.700	37.6 - 43.2
K	1.640 - 1.840	41.7 - 46.7
L	1.780 - 1.965	45.2 - 49.9

3	Compression Lugs Conductor Size (Aluminum or Copper)		
Code	Str/Comp	Compact	Solid
1	1	1/0	1/0
2	2	2	2
10	1/0	2/0	2/0
20	2/0	3/0	3/0
30	3/0	4/0	4/0
40	4/0	250	—
250	250	300	—
300	300	350	—
350	350	400	—
400	400	450/500	—
450	450	500/550	—
500	500	600	—
550	550	650	—
600	600	700	—
650	650	750/800	—
750	700/750	900	—
800	800	900	—
900	900	1000	—
1000	1000	—	—
1100	1100	—	—
1250	1250	—	—

Copper ShearBolt & Conductor Size	
Code	Compression, Compact, Strand
-C1	2 - 4/0
-C2	4/0 - 500
-C3	500 - 750
-C4	750 - 1000
-C5	1000 - 1250

Aluminum ShearBolt & Conductor Size	
Code	Compression, Compact, Strand
-A1	2 - 350
-A2	350 - 750
-A3	750 - 1000
-A4	1000 - 1250

Ordering Formula Example:

The part number for a 15/28 kV Elbow, 600 A with test point, an insulation OD of 1.7", and 1000 kcmil stranded cable is ELB-15/28-610K1000. (Or with AL ShearBolt ELB-15/28-610K-A3)

ELB-15/28-	1	2	3
35 kV Elbow	600 AMP with Test point	1.7" Insulation OD	1000 kcmil Stranded Cond.
= ELB-15/28-	610	K	1000

Ordering Notes

- To include a sealing kit, add "-ESA" suffix for heat-shrinkable and "-CES" suffix for cold applied closure. "-GES" suffix for cold applied GelWrap ES closure.
- If using copper tape shield cable, sealing/grounding ELB-35-600-GRDx (heat-shrink) or ELB-600-CES-GRDX (cold applied), (x = 1, 2, or 3) is required and ordered separately.

ELB Kit Contents

Elbow, Insulating Plug*, Cable Adapter, Stud*, Connector*, Silicone Lubricant, Installation Instruction, Jacket Seal (optional)

* When 900 Series is specified, kit will include copper insulating plug, copper stud, and either a copper-top connector or copper ShearBolt.

Related Test Reports:

EDR-5482, EDR-5476, EDR-5502, EDR-5503

TE Technical Support Center

USA: +1 (800) 327-6996
 Canada: +1 (905) 475-6222
 Mexico: +52 (0) 55-1106-0800
 Latin/S. America: +54 (0) 11-4733-2200
 UK: +44 (0) 800-267666
 France: +33 (0) 1-3420-8686
 Netherlands: +31 (0) 73-6246-999
 China: +86 (0) 400-820-6015

energy.te.com

