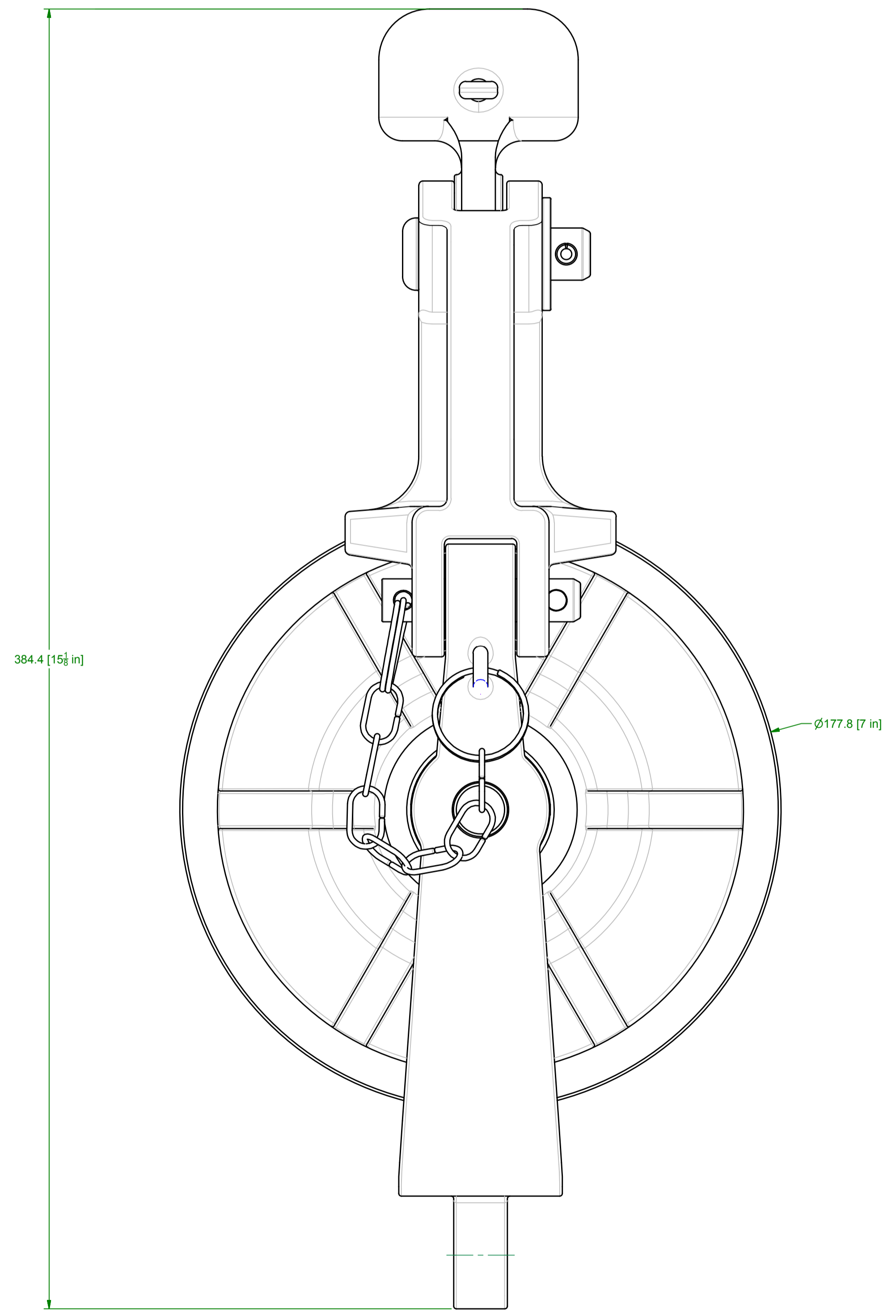
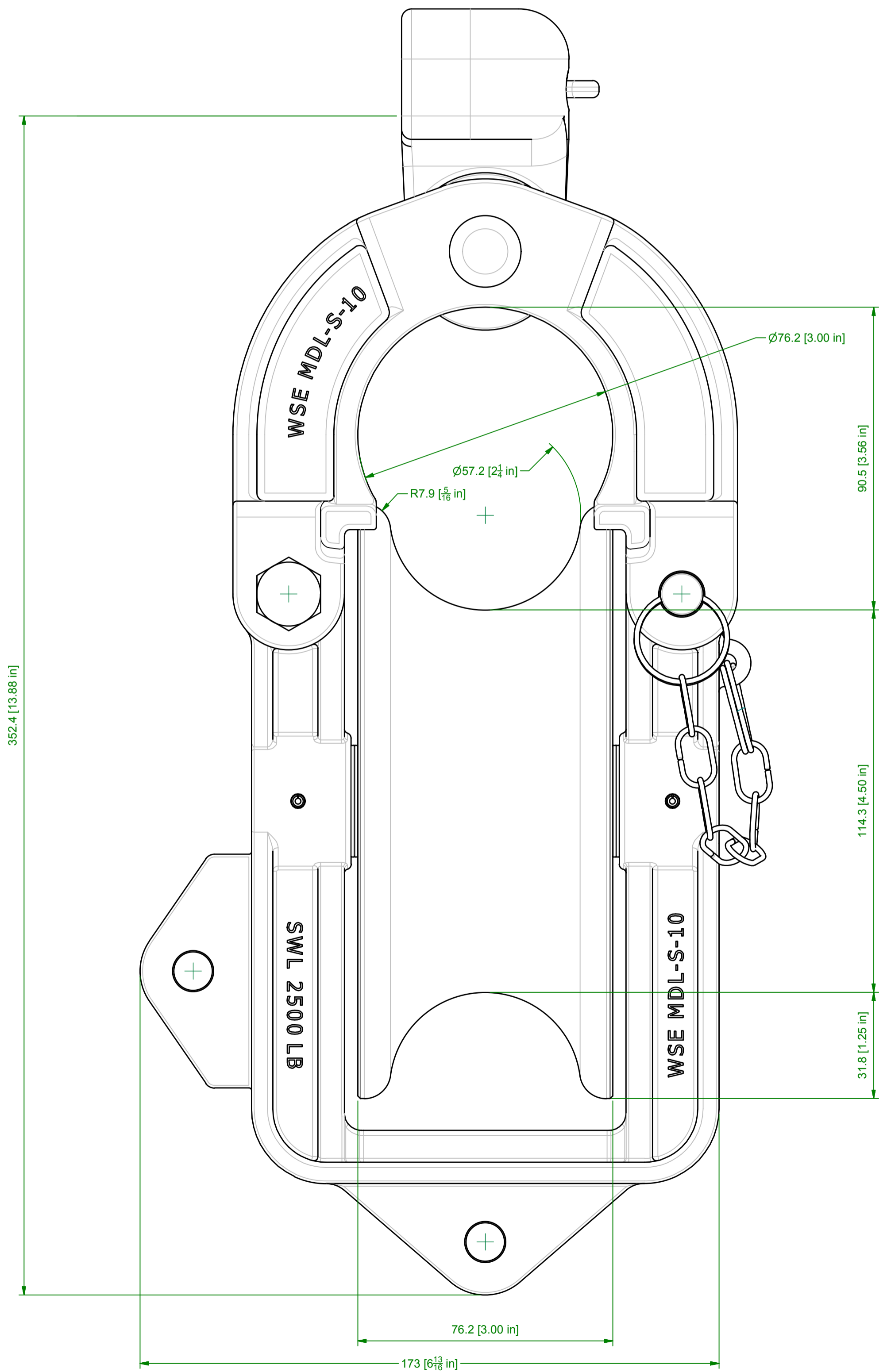
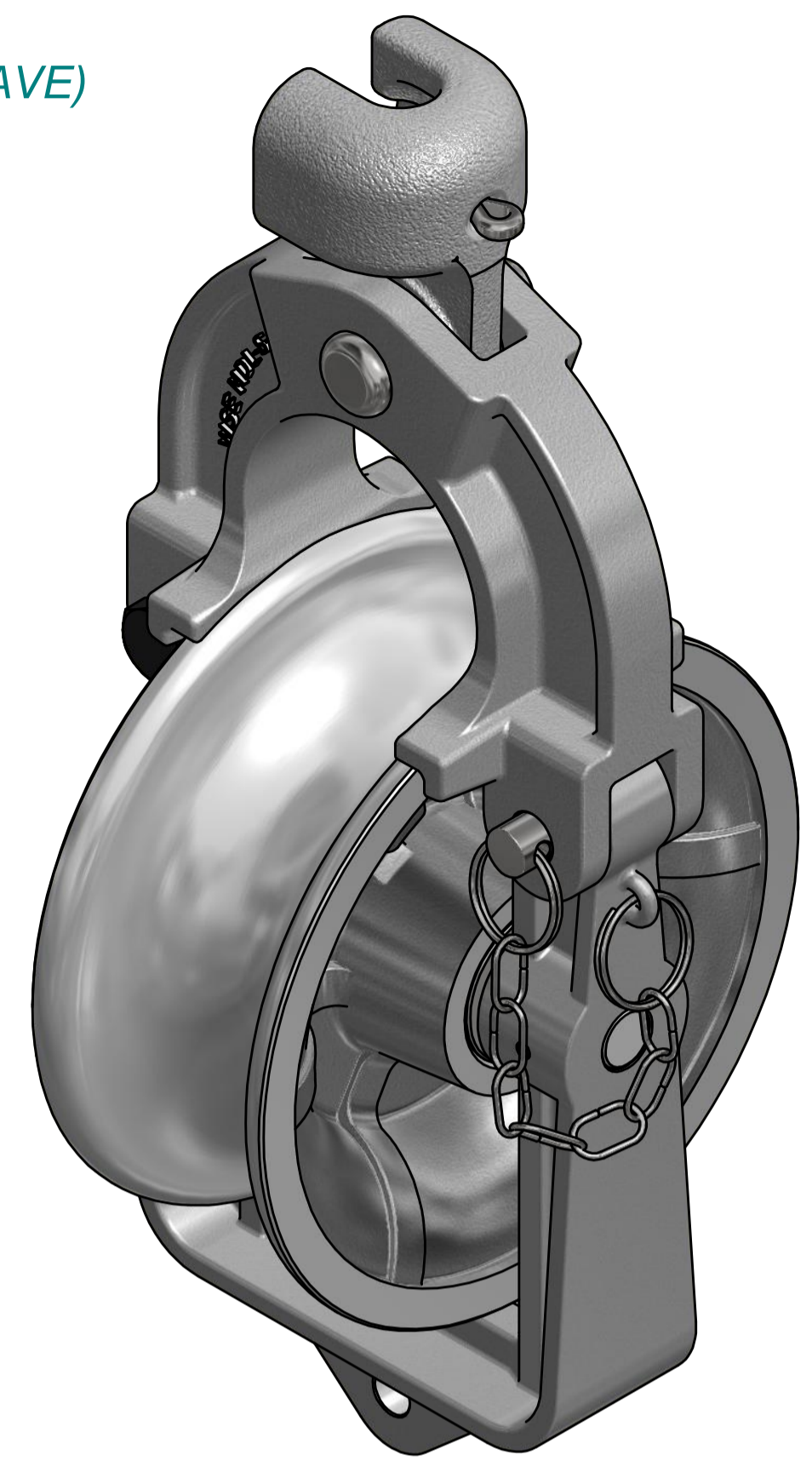


OPTIONAL MODELS:  
 MDL-S-10-UL (URETHANE-LINED DUCTILE IRON SHEAVE)  
 MDL-S-10-DI (DUCTILE IRON SHEAVE)



SAFE WORKING LOAD : 2500 LB

Rev	Date	Comments	By	DDR
H	15/07/16	DATA SHEET	JWE	
G	17/AUG/16	ADDED DIMENSIONS	JWE	
F	07/31/14	ADDED SHEAVE OD & GROOVE ID / RADII	TMW	
E	2/5/14	UPDATED DWG NO & ADDED OPTIONAL MODELS NOTE	TMW	
D	11/25/13	UPDATED PARTS AND SLINGCO PART DESCRIPTIONS	TMW	
C	9/27/13	UPDATED BOM TO INCLUDE SLINGCO PART NUMBERS	JCG	
B	3/17/13	REVISED OVERALL DRAWING AND LAYOUT PER WSE	TMW	
A	9/6/13	INITIAL RELEASE	JMK	

MACHINED SURFACES (Unless Otherwise Stated)  
 Surface Finish - Ra 3.2/CLA 125

FABRICATED WELDMENT (Unless Otherwise Stated)

All Dimensions in Millimetres Unless Otherwise Stated

Projection DO NOT SCALE IF IN DOUBT, ASK

This drawing and the copyright in it are the property of Slingco Ltd. It must not be copied in whole or in part or used as the basis for any other drawing or reproduced without consent in writing of Slingco Ltd and must be returned upon request.

**slingco**™

SLINGCO LIMITED  
 Station Road  
 Facit, Whitworth  
 Lancashire  
 OL12 8LJ  
 ENGLAND

Tel: +44 (0) 1706 855 558  
 Fax: +44 (0) 1706 855 559  
 email: sales@slingco.co.uk  
 http://www.slingco.co.uk

Project  
 PN366 - 7" STRINGING BLOCKS

Title  
 7" FULL BLOCK W/ ALUM SHV

Drawing Number  
 ZAB4004

Operations Part Number  
 MDL-S-10-AL

Sheet Number  
 1

Date  
 17-Sep-13

Drawn by  
 TMW

Approved  
 JCG

Material  
 VARIES

Mass  
 N/A

Revision  
 G